

# Women's Health Conference 2024

24 – 26 Oct • Sands Expo & Convention Centre

Save women's lives, promote wellbeing, and nurture potential – a holistic and life course approach



Global Centre for Asian Women's Health  
Yong Loo Lin School of Medicine

glow  
glownus.org

Université  
Paris Cité

ENGIE

UNITED  
IMAGING

# CONTENTS

**0 3** WELCOME MESSAGE

**0 5** PROGRAMME

**1 1** SPONSOR

**1 3** SPEAKER BIOGRAPHIES

**7 0** SPONSORED SPEAKER

**7 1** ORAL PRESENTATIONS

**7 7** POSTER PRESENTATIONS

**8 0** ACKNOWLEDGEMENTS

**8 1** RECRUITMENT

**8 2** DONATION TO GloW

Dear colleagues and friends,

It is with great pleasure that we welcome each of you to the Women's Health Conference 2024. We are thrilled to see such a diverse gathering from around the world.

The Global Centre for Asian Women's Health (GloW), established within the Dean's Office at NUS Medicine, is dedicated to tackling key health concerns for women across generations and fostering a multi-disciplinary platform with both local and global partners. Building on last year's successful conference, this year's event is organized in collaboration with Université Paris Cité (UPCité), Harvard University, and leading international experts.

Over the next three days, we have the privilege of delving into cutting-edge research, engaging in thought-provoking discussions, and forming collaborations that will shape the future of women's health. Our conference theme, **"Save Women's Lives, Promote Wellbeing, and Nurture Potential – A Holistic and Life Course Approach"** is a call to action for positive changes in:

- Prevention and early detection of major non-communicable diseases
- Life course perspectives on critical health issues during key life stages
- Promoting women's physical and mental health, and social equality, from omics to economics
- Innovations in women's health, integrating advancements from bench to bedside

GloW and UPCité share a vision to advance women's health and well-being worldwide, actively incorporating scientific knowledge into clinical and public health practices through education, research, and practice. We are excited to foster international collaboration and dialogue among experts to address the unique health challenges faced by women.

Make the most of your time here, not only by gaining valuable scientific insights but also by forming lasting friendships and collaborations. Once again, we extend a warm welcome to all of you in Singapore and hope you enjoy your stay!

Warmest regards,



**Professor Cuijin Zhang**

Director, Global Centre for Asian Women's Health (GloW)  
Chair Professor of Women's Health, Department of Obstetrics and Gynecology  
Yong Loo Lin School of Medicine  
National University of Singapore  
Singapore



**Professor Vassilis Tsatsaris**

Director Women's Health Institute  
Université Paris Cité  
France

### DAY 1 | 24 OCTOBER 2024

TIME	PROGRAMME
8:00 – 8:30 am	Participant Registration
8:30 – 8:40 am	<p><b>Welcome</b>                      Matthieu Resche-Rigon (Université Paris Cité) &amp; Yap-Seng Chong (National University of Singapore)                      Vassilis Tsatsaris (Université Paris Cité) &amp; Cuilin Zhang (National University of Singapore)</p>
8:40 – 9:15 am	<p><b>Investing in women's health</b>                      (Chair: Mahesh Choolani)                      Michelle A. Williams (Harvard University)</p>
9:15 – 10:25 am	<p><b>Advancing cancer prevention</b>                      (Chairs: Chee Cheng Ean, Melissa L. Bondy)</p> <ul style="list-style-type: none"> <li>• Heather Eliassen: Breast cancer prevention (Harvard University)</li> <li>• Melissa L. Bondy: Share For Cures – a novel cohort of breast cancer survivors (Stanford University)</li> <li>• Paul Albert: Statistical Challenges in Cohort Studies of the Life-Course: Applications to Cancer Epidemiology and Genetics (U.S. National Cancer Institute)</li> </ul>
10:25 – 10:45 am	<p><b>Coffee break</b>  <b>Poster presentations</b></p>
10:45 – 12:40 pm	<p><b>Improving women's health in the context of social inequalities and environmental challenges</b>                      (Chairs: Clarisse Berthezène, Mariana Losada)</p> <ul style="list-style-type: none"> <li>• Clarisse Berthezène: Women and children's mental health, citizenship and democracy in Britain and France after the Second World War (Université Paris Cité)</li> <li>• Salem Abdessalem: The neglect of women's health in North Africa (Tunisian Society of Cardiology and Cardiovascular Surgery)</li> <li>• Elie Azria: Social inequalities, maternal and perinatal health (Université Paris Cité)</li> <li>• Tangeni Auala: Access to Essential Diagnostic Tests and Medicines for Cardiovascular Care in Women (Windhoek Central Hospital, Namibia)</li> <li>• Jason Kai Wei Lee: Women on the frontlines of a boiling world (National University of Singapore)</li> </ul>
12:40 – 1:40 pm	<p><b>Lunch break</b>  <b>Flash Oral presentations</b></p>

## DAY 1 | 24 OCTOBER 2024

TIME	PROGRAMME
1:40 – 2:50 pm	<p><b>Malnutrition in Asian population</b> (Chairs: Christiani Jeyakumar Henry, Qi Sun)</p> <ul style="list-style-type: none"> <li>• Christiani Jeyakumar Henry: Malnutrition in Asian population (National University of Singapore)</li> <li>• Chittaranjan S. Yajnik: Life-course evolution of glucose intolerance: DOHaD lessons from Pune, India (King Edward Memorial Hospital, India)</li> <li>• Zaleha Abdullah Mahdy: Pre-eclampsia: Screening, prevention and role of micronutrients (National University of Malaysia)</li> </ul>
2:50 – 4:10 pm	<p><b>Aging and women's health: new insights for healthy aging</b> (Chairs: Rong Li - NUS)</p> <ul style="list-style-type: none"> <li>• Brian Kennedy: Aging and reproductive aging as overlapping phenomena (National University of Singapore)</li> <li>• Frank Hu: Precision nutrition approach to improve women's health and longevity (Harvard University)</li> <li>• Susanna Harding: Older women and health in Singapore (Tsao Foundation)</li> <li>• Q&amp;A session</li> </ul>
4:10 – 4:30 pm	<p><b>United Imaging sponsored talk:</b> Rising with women, leading with innovation, caring with compassion – Yu Wang</p>
4:30 – 4:50 pm	<p><b>Coffee break</b> <b>Poster presentations</b></p>
4:50 – 5:30 pm	<p><b>Stage for outstanding abstracts and stars</b> (Chairs: Vassilis Tsatsaris, Wei Wei Pang)</p> <ul style="list-style-type: none"> <li>• Naho Morisaki: Caregivers' climacteric symptoms and associations with adolescent risk behavior and mental health: findings from the Japanese Adolescent and Youth cohort (National Center for Child Health and Development, Japan)</li> <li>• Queenie Ling-Jun Li: Exploring prediction models for hypertensive disorders during pregnancy using novel preconception and early-pregnancy markers through machine learning approaches (National University of Singapore)</li> <li>• Shiao-Yng Chan: Greater adherence to a vegetable-fruit-nut dietary pattern and higher pregnancy plasma vitamins B2 and B6 associate with reduced risk of preterm delivery (National University of Singapore)</li> </ul>
5:30 – 5:40 pm	<p><b>Best abstract and best poster awards of the day</b> (Chairs: Matthieu Resche-Rigon, Cuilin Zhang)</p>

### DAY 2 | 25 OCTOBER 2024

TIME	PROGRAMME
8:30 – 9:00 am	Participant Registration
9:00 – 10:00 am	<p><b>Opening ceremony and celebration for GloW-UPCité partnership</b></p> <ul style="list-style-type: none"> <li>• Matthieu Resche-Rigon and Yap-Seng Chong</li> <li>• Vassilis Tsatsaris and Cuilin Zhang</li> <li>• Guest of Honor: Mdm Rahayu Mahzam</li> <li>• Her Excellency Ms Minh-di Tang</li> <li>• Photo session</li> </ul>
10:00 – 10:30 am	<p><b>Coffee break</b> <b>Poster presentations</b></p>
10:30 – 11:30 am	<p><b>Panel discussion: World Economic Forum and NUS joint session</b> <b>Addressing disparities in women's health across Asia: a holistic life-course perspective</b></p> <p>Moderator: Michelle A. Williams (Harvard University)</p> <ul style="list-style-type: none"> <li>• Welcoming remarks: Cuilin Zhang (National University of Singapore)</li> <li>• Opening remarks: Amira Ghouaibi (World Economic Forum) and Victor Dzau (Global Alliance of Women's Health)</li> <li>• Closing remarks: Amira Ghouaibi and Cuilin Zhang</li> </ul> <p>Speakers:</p> <ul style="list-style-type: none"> <li>• Helena Hui Wang (Asia Senior Executive Editor of the Lancet)</li> <li>• Megan Ann Greenfield (Partner, McKinsey Health Institute)</li> <li>• Zaleha Abdullah Mahdy (Professor and Head of Department, Obstetrics and Gynaecology, UKM Medical Centre, National University of Malaysia)</li> <li>• Yap-Seng Chong (Dean, Yong Loo Lin School of Medicine)</li> </ul>
11:30 – 12:10 pm	<p><b>Lancet's commitment to women's health</b></p> <p>Helena Hui Wang (Asia Senior Executive Editor of the Lancet)</p>
12:10 – 1:10 pm	<p><b>Lunch break</b> <b>Flash Oral presentations</b></p>
1:10 – 2:45 pm	<p><b>Challenges faced by women with cardiovascular diseases in low- and middle-income countries</b></p> <p>(Chair: Alexandre Mebazaa, Amira Ghouaibi)</p> <ul style="list-style-type: none"> <li>• Irina Mbanze: HIV+ and cardiovascular disease (Eduardo Mondlane University, Mozambique)</li> <li>• Neusa Jessen: Heart failure in Africa (Eduardo Mondlane University, Mozambique)</li> <li>• Prof Alexandre Mebazaa: Cardiovascular diseases among women (Université de Paris Cité)</li> <li>• Novi Yanti Sari (Tham): Challenges of cardiac disease management in Asian Women (Dr Mohammad Hoesin Hospital, Indonesia)</li> </ul>

### DAY 2 | 25 OCTOBER 2024

TIME	PROGRAMME
2:45 – 3:55 pm	<p><b>Advancing women's health through innovative technologies</b> (Chairs: Vassilis Tsatsaris, Su-Yen Goh)</p> <ul style="list-style-type: none"> <li>• Shruthi Mahalingaiah: Lessons from the Apple Women's Health Study: a digital, longitudinal cohort (Harvard University)</li> <li>• Su-Yen Goh: Digital health and cardiovascular, metabolic health, and healthcare innovation (Singapore General Hospital)</li> <li>• McKenna Smet: Enhancing women's health through innovative approaches: integrating nutritional and lifestyle interventions with digital health tools and telemedicine (Elite Wellness Performance and Recovery, U.S.)</li> </ul>
3:55 – 4:25 pm	<p><b>Coffee break</b> <b>Poster presentations</b></p>
4:25 – 5:15 pm	<p><b>Stage for outstanding abstracts and stars</b> (Chairs: Queenie Ling-Jun Li, Elie Azria)</p> <ul style="list-style-type: none"> <li>• Jingjing Jiao: Unveiling the benefits of marine n-3 fatty acids on carotid atherosclerosis and lipoprotein profiles in diabetic patients - who will benefit? (Zhejiang University, China)</li> <li>• Guoqi Yu: The interplay of persistent organic pollutants and habitual diet in association with the risk of gestational diabetes (National University of Singapore)</li> <li>• Wen-Lun Yuan: Cardiometabolic health from mother to offspring: Findings from the EDEN Cohort Study (Université Paris Cité)</li> <li>• Claire Guivarch: Longitudinal amino acid profiles in pregnancy and fetal health (National University of Singapore)</li> </ul>
5:15 – 6:45 pm	<p><b>Spices, aromatics, and the Asian plant-forward kitchen: culinary strategies for optimal family nutrition (cooking demonstration and panel discussion)</b></p> <ul style="list-style-type: none"> <li>• Greg Drescher (Culinary Institute of America)</li> <li>• Mai Pham (Star Ginger Restaurants)</li> <li>• Malcolm Lee (Candlenut, Pangium)</li> <li>• Eve Felder (Culinary Institute of America)</li> </ul>
6:45 – 6:55 pm	<p><b>Best abstract and best poster awards of the day</b> (Chairs: Vassilis Tsatsaris, Cuilin Zhang)</p>
6:55 – 7:15 pm	<p><b>GloW award ceremony</b></p>



### DAY 3 | 26 OCTOBER 2024

TIME	PROGRAMME
8:00 – 8:30 am	Participant Registration
8:30 – 10:05 am	<p><b>Nutrition and lifestyle as medicine: implications on women's health</b> (Chairs: Qi Sun, Christiani Jeyakumar Henry)</p> <ul style="list-style-type: none"> <li>Walter Willett: Studies on diet and women's health: methodologic considerations (Harvard University)</li> <li>Miguel A. Martínez-González: Wine, alcohol consumption and women's health (Universidad de Navarra, Spain)</li> <li>Eva Schernhammer: Sleep, circadian rhythm, and women's health (Medical University of Vienna, Harvard University)</li> </ul>
10:05 – 10:35 am	<p><b>Coffee break</b> <b>Poster presentations</b></p>
10:35 – 11:45 am	<p><b>Omics, innovative technologies and women's health</b> (Chairs: Shruthi Mahalingaiah, Mariana Losada)</p> <ul style="list-style-type: none"> <li>Qi Sun: Human gut microbiota as key mediator and modulator of diet-health relationships (Harvard University)</li> <li>Yves Ville: Artificial intelligence in obstetrical ultrasound (Université Paris Cité)</li> <li>Juliana Antero: Leveraging Menstrual Cycle Physiology to Optimize Women's Health, Wellbeing, and Performance: Insights from Olympic Athletes. (University Paris Cite)</li> </ul>
11:45 – 1:15 pm	<p><b>Lunch break</b> <b>Flash Oral presentations</b></p>
1:15 – 2:50 pm	<p><b>Enhancing maternal health through effective research, screening, and prevention</b> (Chairs: Michelle A. Williams, Hiromi Komiya)</p> <ul style="list-style-type: none"> <li>Vassilis Tsatsaris: Screening and prevention of pre-eclampsia (Université Paris Cité)</li> <li>Edouard Lecarpentier: Innovative therapeutic approaches for pre-eclampsia (Université Paris Cité)</li> <li>Catherine Deneux-Tharoux: Learning from maternal deaths surveillance: added value of multi-country studies (Université Paris Cité)</li> <li>Anne Chantry: Promoting midwifery research to improve maternal and perinatal health (Université Paris Cité)</li> </ul>

## DAY 3 | 26 OCTOBER 2024

TIME	PROGRAMME
2:50 – 4:25 pm	<p><b>Overcoming challenges in reproductive health</b> (Chairs: Rong Li – Peking University, Pietro Santulli)</p> <ul style="list-style-type: none"> <li>• Gabriel Livera: Impact of the environment on oocyte quality and women's fertility (Université Paris Cité)</li> <li>• Rong Li: The current situation of PCOS prevalence and changes in diagnosis and treatment concepts (Peking University Third Hospital)</li> <li>• Charles Chapron: Why rethinking endometriosis diagnosis is a priority? (Université Paris Cité)</li> <li>• Pietro Santulli: Management of endometriosis-related infertility (Université Paris Cité)</li> </ul>
4:25 – 4:55 pm	<p><b>Coffee break</b> <b>Poster presentations</b></p>
4:55 – 6:25 pm	<p><b>Panel discussion: low fertility rates across the world: can we revert it?</b> (Chair: Zhongwei Huang, Brian Kennedy)</p> <ul style="list-style-type: none"> <li>• Zhongwei Huang (National University of Singapore)</li> <li>• Hiromi Komiya (Fukushima Medical University, Japan)</li> <li>• Pietro Santulli (Université Paris Cité)</li> <li>• Rong Li (Peking University Third Hospital, China)</li> <li>• Jung Ryeol Lee (Seoul National University Bundang Hospital)</li> </ul>
6:25 – 6:35 pm	<p><b>Best abstract and best poster awards of the day</b> (Chair: Matthieu Resche-Rigon, Cuilin Zhang)</p>
6:35 – 6:45 pm	<p><b>Closing ceremony</b> (Matthieu Resche-Rigon, Vassilis Tsatsaris, Cuilin Zhang)</p>

## United Imaging



United Imaging Healthcare is part of the United Imaging Group, committed to delivering advanced medical imaging, radiotherapy equipment, life science instruments, and intelligent digital solutions globally. Established in 2011 and headquartered in Shanghai, the company operates subsidiaries and R&D centers in China, the U.S., Japan, Australia, Poland, Malaysia, the UAE, and beyond. With a world-class team including over 140 globally experienced scientists and more than 600 R&D and management professionals in the medical industry, 40% of its 7,800+ employees are dedicated to research and development.

United Imaging Healthcare has launched over 120 pioneering products worldwide, such as the Total-Body PET/CT, HD TOF PET/MR, Whole-body UHF 5T MR, 75cm Ultra-Wide Bore 3.0T MR, 640-Slice CT Scanner, and Fully Integrated CT-linac. All core technologies are developed in-house and have achieved global and national acclaim for their performance.

The company collaborates with prestigious clinical and research institutions, including Yale University, UC Davis, Washington University in St. Louis, Stony Brook University, University of Bologna, King Hussein Cancer Center, and Fujita Health University Hospital. United Imaging's products are used in over 13,700 medical and research institutions across more than 70 countries, including the U.S., Singapore, Japan, Korea, Italy, Spain, India, Australia, Poland, Malaysia, New Zealand, and the UAE.

Driven by the mission "To Bring Equal Healthcare for All" and the vision "Leading Healthcare Innovation," United Imaging aims to enhance global access to high-end medical equipment and services through collaboration with hospitals, universities, research institutions, and industry partners.

## ENGIE Global Energy Management & Sales (GEMS)



**ENGIE GEMS** provides energy supply solutions and risk management services to support its clients through their decarbonization journey, while optimizing ENGIE's assets and contributing to value creation.

ENGIE is a **global reference in low-carbon energy and services** with a leading energy management business & piloted by its entity "Global Energy Management Sales" who built its savoir-faire managing the Group's large and diverse asset portfolio over 20+ years.

We cover the **full energy mix**: renewable and thermal power, natural gas & LNG, biomass, environmental products. Our experts provide tailor made solutions based on a wide range of savoir-faire in energy management with a strong focus on decarbonation and decentralization.

Our 190,000 clients span the entire value chain: producers, asset developers, financial players, utilities, distributors and industrials. Our global reach and strong local presence enable us to offer these diverse clients tailor-made services and respond to rapid changes in mature or emerging markets alike.

Our 4 expertises:

- Asset management
- Energy transition services
- Energy supply & global commodities
- Risk management & market access

With more than **20 languages** and **40 nationalities** represented, our 3,600 employees are spread across 4 continents in cities all over the world. GEMS operates in a **fair and inclusive environment** and is committed to making a positive impact. Our values are based on collaboration & care, Learning & Growth, Client Culture, Leadership, Authenticity and Transparency.

At GEMS we encourage breakthrough results, team spirit, curiosity and innovation while preserving the right **work/life balance** for you.



## **Prof Salem Abdessalem**

President of the Tunisian Society of Cardiology and Cardiovascular Surgery, Tunisia

1991 Medicine faculty of tunis 1997 Fellowship in cardiology 2001 Interventional Cardiology Fellowship: Faculté de médecine René Descarte & Marie Lannelongue Hospital (France) 2003 Assistant Professor of Cardiology: Medicine faculty of tunis, La Rabta university Hospital 2009 Associate Professor of Cardiology: Medicine faculty of tunis, La Rabta university Hospital 2013 La Clinique Pasteur of Tunis (Private Hospital) Areas of expertise: Coronary Interventional Cardiology, Hypertension, Heart Failure, microcirculation and endothelial pathophysiology He is board member in several national and international guidelines He is the past Vice-president of the ATERA association (Tunisian Atherosclerosis Research Association) He is the Current President of the Tunisian Society Of Cardiology and CardioVascular Surgery (STCCCV)



**Dr Paul S. Albert**

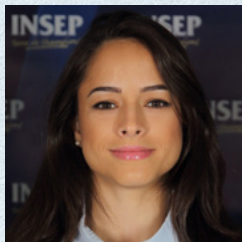
Chief and Senior Investigator, Biostatistics and Bioinformatics Branch Division of Cancer Epidemiology & Genetics, National Cancer Institute, US

Dr. Albert is Senior Investigator and Director of the Biostatistics Branch in the Division of Cancer Epidemiology and Genetics at the National Cancer Institute in the U.S.

He is Co-Editor in Chief of Statistics in Medicine, a leading journal of medical statistics worldwide. Dr. Albert is currently President-Elect of the Eastern North American Region of the International Biometrics Society; he will serve as President in 2025. He is an associate editor of Biometrics and has served for many years as a statistical editor for the American Journal of Obstetrics & Gynecology.

Dr. Albert is a fellow of the American Statistical Association.

Dr. Albert's methodological research has focused on longitudinal data analysis, the analysis of biomarker data, and diagnostic testing. He has been a statistical investigator for over 35 years working in many areas in medicine and epidemiology, including neurology, obstetrics, and cancer epidemiology and genetics.



### **Dr Juliana Antero**

Researcher, Institut de Recherche bioMédicale et d'Epidémiologie du Sport (IRMES), Institut National du Sport de l'Expertise et de la Performance (INSEP), Paris, France

Dr Juliana Antero is an epidemiologist researcher at the French National Institute of Sport (INSEP), where she primarily assesses health risks among elite athletes through longitudinal follow-ups. She currently leads a research program called Empow'her, which monitors female athletes preparing for the Olympic Games. The program aims to investigate the impact of hormonal phases associated with the menstrual cycle and the use of oral contraception on training, performance, and well-being in female athletes.

Juliana has served as a keynote speaker at numerous international conferences and symposia, including events organized by the International Olympic Committee. She is also a referee for UEFA on menstrual cycle tracking in sports and a member of the steering committee for women's health at the Université Paris Cité.



## **Dr Tangeni Auala**

Cardiologist

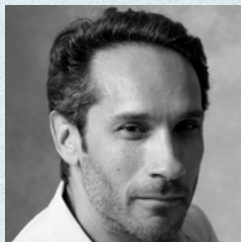
Division of Adult Cardiology at the Windhoek Central Hospital Complex in Namibia

Tangeni Auala leads the Division of Adult Cardiology at the Windhoek Central Hospital Complex in Namibia . She completed her cardiology training at the University of Cape Town and aims to provide a comprehensive clinical , imaging , device , structural and interventional , electrophysiology services for cardiovascular disease across the country.

She is a senior lecturer at The University of Namibia School of Medicine and enjoys mentoring medical students , interns and house officers. Her research interests span the spectrum of cardiovascular disease with a particular in women's health , neglected cardiovascular disease and health economics.

She is a World Heart Federation Emerging leader with an interest in elucidating the disparities in access , availability and affordability to essentials cardiovascular diagnostics and therapeutics in effort to provide universal health coverage to all.





### **Prof Elie Azria**

Professor and Head of Department, Department of Obstetrics and Gynecology, St Joseph Hospital; Centre of Research in Epidemiology and Statistics, Inserm, INRAE, Paris, France

Professor of Obstetrics and Gynecology at the Université Paris Cité (Paris, France) and head of the Groupe Hospitalier Paris Saint Joseph Maternity unit in Paris, Elie Azria is also a researcher in epidemiology. Member of the EPOPé research team (UMR 1153), his research focuses on understanding the mechanisms of social inequalities in maternal and perinatal health and identifying relevant intervention to reduce their magnitude, as well as to promote access to healthcare for women in the most deprived social situations and migrant women.



### **Prof Clarisse Berthezène**

Professor of History, Université Paris Cité, Visiting scholar at the Center for European Studies at Harvard, Senior member of the Institut Universitaire de France, Chair of European Cost project ‘Who cares in Europe?’

Clarisse Berthezène is a Professor of British history at University Paris Cité. She holds a chair of scientific mediation at the Institut Universitaire de France (IUF). She served as vice president and interim president of University Paris Cité from 2019 to 2023. She has written extensively on the history of the British Conservative Party and on conservatism from a transnational perspective. Her publications include *Training Minds for the War of Ideas: Ashridge College, the Conservative Party and the Cultural Politics of Britain, 1929–54* (MUP, 2015, 2019); (edited with Jean-Christian Vinel) *Conservatismes en mouvement: une approche transnationale au XXe siècle* (Editions de l'EHESS, 2016) and (edited with Julie V. Gottlieb) *Rethinking Right-Wing Women* (MUP, 2018); (edited with L.L. Downs & J.V. Gottlieb) *Women on the Right. Politics and Social Action in comparative and transnational perspective, 1870s-1990s* (Bloomsbury, 2024). Her current research examines the relationships among voluntary associations, states and political parties in the creation of social welfare in Europe and focuses on gendered health inequalities.

Berthezène was a student of the Ecole Normale Supérieure (ENS) in Paris. She received a Master's degree in history at the London School of Economics and Political Science (LSE). She holds an MPhil in history from Sciences Po and a PhD from Sorbonne Nouvelle University.



## **Dr Sanjana Bhardwaj**

Deputy Director, Program Advocacy and Communications Bill & Melinda Gates Foundation

Dr. Sanjana Bhardwaj leads policy and advocacy work related to family planning; maternal, newborn, and child health; nutrition; and primary health care systems. Her team works to create and advance strategies that increase political commitment and resources devoted to these priorities, in collaboration with country-based foundation teams. Her team also fosters partnerships that can accelerate, expand, and sustain impact.

Sanjana is a medical doctor and public health practitioner who has worked in clinical practice and as a primary health care physician in rural India. She was elected as a Fellow by Distinction of the Faculty of Public Health, Royal College of Physicians and Surgeons, in the UK.

Before joining the foundation in 2022, Sanjana worked with the United Nations, leading efforts focused on child survival and development across Bangladesh, India, Papua New Guinea, Nigeria, and South Africa. She also worked in academia, teaching in and spearheading the development of a Master of Public Health degree course in health behavior at the University of the West Indies. Earlier, Sanjana supported the conceptualization and founding of a nonprofit focusing on public health management and innovative solutions and partnerships for public health in India.

Sanjana's work has been published in peer-reviewed journals, and she is a recipient of service awards and certificates in recognition of her contributions.



### **Prof Melissa Bondy**

Professor and Chair,  
Department of Epidemiology and Population Health, Stanford University  
School of Medicine

Dr. Melissa Bondy is the chair of the Department of Epidemiology and Population Health at Stanford School of Medicine and the associate director for population sciences at the Stanford Cancer Institute. Her research is focused on genetic and molecular epidemiology, focusing on the roles of heredity and genetic susceptibility in the etiology of cancer and outcomes. She is recognized as a global leader of brain cancer research. Dr. Bondy received her PhD in epidemiology at the University of Texas School of Public Health and recently completed her service on the National Cancer Institute's Board of Scientific Advisors.



### Anne Chantry

Professor of Midwifery at Université ParisCité

Anne Chantry is a Professor of Midwifery at Université ParisCité. She is a French midwife and epidemiologist who focuses on low-risk women (examining their frequency, profile, care management, and outcomes). Her research aims to address the following question: How can care during pregnancy, labor, and postpartum be rationalized according to women's level of risk? In other words, her goal is to reduce unnecessary medical interventions for women who do not need them, in order to avoid iatrogenic effects, while maintaining a very high level of safety for both mothers and their babies. Involved in the midwifery education program, she is also the Vice-Director of Research at the midwifery university department of Université ParisCité.



### A/Prof Shiao-Yng Chan

Associate Professor in Obstetrics and Gynaecology at the Yong Loo Lin School of Medicine National University of Singapore, Senior Consultant Obstetrician at the National University Hospital (Singapore), and Deputy Executive Director of the Singapore Institute for Clinical Sciences (A\*STAR).

Shiao-ying Chan is an Associate Professor in Obstetrics and Gynaecology at the Yong Loo Lin School of Medicine National University of Singapore, Senior Consultant Obstetrician at the National University Hospital (Singapore), and Deputy Executive Director of the Singapore Institute for Clinical Sciences (A\*STAR). She is a fellow of the RCOG (UK) with a special interest in Maternal Medicine.

She is the Principal Investigator in Singapore for the multinational (UK, Singapore, New Zealand) NiPPeR (Nutritional Intervention Preconception and during Pregnancy to maintain healthy glucosE levels and offspRIng health) trial. She also has leading roles in Singapore's birth cohorts (GUSTO, S-PRESTO) and conducts other multicentred randomised controlled trials in preconception and pregnancy (e.g. TABLET).

Overall, her group's research seeks to develop and validate novel interventions and health advice to optimize maternal health status to improve pregnancy outcomes and reduce future offspring health risks, ultimately aiming to improve the health of the next and subsequent generations.



### **Prof Charles Chapron**

Head and Chair,  
Université Paris Cité  
Service de gynécologie obstétrique et médecine de la reproduction,  
CHU Cochin, Paris, France  
Co-founder and first President of the Society of Endometriosis and  
Uterine Disorders (SEUD)

Professor Chapron's research activities focus on the pathogenesis, assessment, and management of endometriosis, as well as gynecologic operative laparoscopy. He has authored and co-authored 435 peer-reviewed papers in international (356 publications) and in national (127 publications) scientific journals on surgical laparoscopy in gynecology, reproductive medicine, endometriosis and adenomyosis. Publications were cited more than 32 205 times and his H-factor is 96 (indice i10 is 343). Professor Chapron has performed over 1 000 scientific presentations in international (747) and in national (336) meetings. He is the coordinator of 14 scientific books and the author of more than 80 chapters in other scientific books.



### **Prof Yap Seng Chong**

Dean Yong Loo Lin School of Medicine,  
National University of Singapore

Professor Yap-Seng Chong is the Dean of the Yong Loo Lin School of Medicine and a clinician-investigator with a special interest in fetal growth and early development. He is also the Chief Clinical Officer (CCO) of the Singapore Institute for Clinical Sciences, Agency for Science, Technology and Research (A\*STAR) and the Lien Ying Chow Professor of Medicine in the Department of Obstetrics & Gynaecology, Yong Loo Lin School of Medicine, National University of Singapore (NUS). He is the Lead Principal Investigator of the Growing Up in Singapore Towards healthy Outcomes (GUSTO) and the Singapore Preconception Study of long-Term maternal and child Outcomes (S-PRESTO) studies. He is also a Senior Consultant in the Department of Obstetrics & Gynaecology at the National University Hospital (NUH), and a member of the Executive Group of the National University Health System (NUHS) as well as a board member of the National Medical Research Council.

His other research interests include strategies to promote breastfeeding, natural childbirth, and intrapartum and postpartum management issues. He has over 390 research publications, including papers in *The Lancet*, *JAMA*, and *BMJ*, and received more than \$100 million in research grant funding. He also has numerous collaborations with industry, particularly in the area of early human development and nutrition. He was awarded the National Outstanding Clinician Scientist Award by the Ministry of Health in 2017.





### **A/Prof Mahesh Choolani**

Head of the Department of Obstetrics and Gynaecology, Senior Consultant in Maternal-Fetal Medicine at the National University Health System, and Co-Director of the National University Centre for Women and Children (NUWoC)

Associate Professor Choolani is the Head of the Department of Obstetrics and Gynaecology, Senior Consultant in Maternal-Fetal Medicine at the National University Health System, and Co-Director of the National University Centre for Women and Children (NUWoC). NUWoC's mission is to empower women, children, and their families to lead healthier lives, and a vision to establish itself as a centre of excellence in Women's and Children's Health. It is committed to developing community-based services and improving healthcare accessibility for women and children.

A/Prof Choolani is also the President of the College of Clinician Scientists at the Academy of Medicine, the Immediate Past President of the International Society for Prenatal Diagnosis (ISPD), and the President-at-Large of the International Fetal Medicine and Surgery Society (IFMSS). He has authored over 270 peer-reviewed publications, and has a h-index over 50. His areas of interest are prenatal diagnosis, fetal medicine and therapy, gene and stem cell technologies, ovarian cancer, and artificial intelligence. In 2023, he received the National Outstanding Clinician Scientist Award from the Ministry of Health for his commitment to developing the clinician-scientist community in Singapore and his contributions to the field of O&G.

His vision is to drive clinical care and translational research programs to advance Women's and Children's Health in the hospital and the community, to shift the paradigm from well-being to being well.



### **Prof Catherine Deneux-Tharoux**

MD, PhD, Research Director in Perinatal Epidemiology, Director of Institute of Women's Health, Université Paris Cité

After starting her career in clinical activity, Catherine Deneux-Tharoux chose to become a full-time researcher in perinatal epidemiology. She is currently a Research Professor (Directeur de Recherche) at INSERM.

Her research focuses on identifying the determinants of the most severe maternal complications: maternal mortality and severe morbidity, with a special interest in determinants related to care and its quality. The final objective is to identify areas for improvement to reduce the occurrence of these severe events. Key events of interest include postpartum hemorrhage (the main killer of mothers worldwide) and maternal mental health (an emerging major issue). Her research program combines observational and interventional (RCTs) approaches, in France and Europe.

Prof Deneux-Tharoux coordinates the French Confidential Enquiry into Maternal Deaths (ENCMM) and leads the "Severe Maternal Morbidity" group in the EPOPé team of the CRESS. She chairs the Scientific Board of the French Society for Perinatal Medicine (SFMP).



### Mr Greg Drescher

Senior Advisor, Strategic Initiatives

The Culinary Institute of America  
New York | California | Texas | Singapore

Greg Drescher is senior advisor for strategic initiatives at [The Culinary Institute of America \(CIA\)](#). Previously, and most recently as CIA vice president for strategic initiatives and industry leadership, he designed and oversaw the college's [leadership initiatives](#), including academic and strategic partnerships, conferences, and other global initiatives. Over the course of nearly 30 years with the CIA, he has led the creation of the college's [Worlds of Flavor International Conference & Festival](#), as well as a portfolio of health and sustainability leadership programs including [Menus of Change](#) and [Healthy Kitchens, Healthy Lives](#), both jointly presented by the Harvard T.H. Chan School of Public Health; the [Menus of Change University Research Collaborative](#), co-led by the CIA and Stanford University; and the annual [Global Plant-Forward Culinary Summit and Plant-Forward Kitchen digital media initiatives](#). In 2005, Greg was inducted into the James Beard Foundation's Who's Who of Food & Beverage in America, and subsequently shared a second and third Beard Award for the CIA's World Culinary Arts digital media series. In the early 1990's, before joining the CIA, he jointly spearheaded a collaboration of some of the world's leading health experts in co-authoring [The Mediterranean Diet Pyramid: A Cultural Model for Healthy Eating](#).



## **Prof Heather Eliassen**

Professor of Nutrition and Epidemiology, Harvard T.H. Chan School of Public Health

Professor of Medicine, Harvard Medical School

Associate Director, Channing Division of Network Medicine

Director, Chronic Disease Epidemiology Unit

Director, Channing/Harvard Cohorts Biorepository

Co-Leader, Dana-Farber/Harvard Cancer Center Cancer Epidemiology Program

Dr. Heather Eliassen is Professor of Nutrition and Epidemiology at the Harvard T.H. Chan School of Public Health and Professor of Medicine at Harvard Medical School. She is Associate Director of the Channing Division of Network Medicine and Director of the Chronic Disease Epidemiology Unit at Brigham and Women's Hospital. Dr. Eliassen is co-PI of two ongoing prospective cohort studies, the Nurses' Health Study (NHS), founded in 1976 with 121,700 women, and the Nurses' Health Study II (NHSII), founded in 1989 with 116,400 women. She also is Director of the Channing/Harvard Cohort Biorepository, which houses more than three million biospecimens from 200,000 cohort participants, and Co-Leader of the Cancer Epidemiology Program at the Dana-Farber/Harvard Cancer Center. Her research focuses on breast cancer, and the roles of diet, lifestyle, and underlying biology in risk and survival. Specifically, she is interested in modifiable factors that may reduce the risk of developing breast cancer, and those that may improve survival after breast cancer diagnosis. She incorporates biomarkers, including metabolomic profiles, hormones, and specific markers of dietary intake, as well as biomarkers from tumor tissue. Dr. Eliassen is actively involved in teaching and mentoring graduate students at the Harvard Chan School, and mentoring postdoctoral fellows and junior faculty members at Harvard and Brigham and Women's Hospital. In addition, much of her time is spent working with both internal and external investigators, facilitating the use of the cohort resources.



## Eve Felder

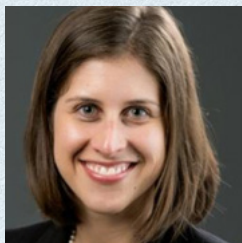
Managing Director  
The Culinary Institute of America, Singapore (CIA, SG)

Eve Felder is Managing Director of The Culinary Institute of America, Singapore (CIA, SG).

She has been a leader in culinary education since 1994. Starting as a chef instructor at the The Culinary Institute of America (CIA), Eve rapidly rose to be the only female culinary associate dean leading a team of 45 chef faculty in developing curriculum and implementing operational processes for skill based laboratories, production kitchens, global flavors and techniques classes and for 3 public restaurants.

Chef Felder graduated with honors from the CIA and received the Francis L. Roth Award for Outstanding Performance. She earned a bachelor's degree from the College of Charleston, in her hometown of Charleston, South Carolina. She received her Master's of Science degree at Rochester Institute of Technology in Rochester, New York In 2007, she received the first Educator of the Year award from the national organization, Women Chefs and Restaurateurs. In 2011, she was honored with the Highest Leaf Award by the Women's Venture Fund.

She has traveled throughout the world studying the historical connection between the culinary traditions and agricultural practices of different cultures. Her interest lies in understanding the impact of the global pantry on nutritional concerns for the 21st century.



### **Megan Greenfield**

Affiliated leader of the McKinsey Health Institute's Health Equity portfolio, including women's health, and leader in McKinsey's healthcare strategy and commercial excellence programs

Megan Greenfield, PhD, is a partner in the McKinsey Boston office and is an affiliated leader of McKinsey Health Institute (MHI). MHI is a non-profit-generating entity dedicated to improving global health outcomes, adding life to years and years to lives. She is a global co-leader of the MHI and McKinsey's women's health work and has published several papers on women's health including the recent article "The state of US women's heart health: A path to improved health and financial outcomes," with the American Heart Association. She has led other large-scale health equity efforts including a multiyear program to increase diversity in clinical trials.

Megan has spent many years in advising leadership teams of healthcare institutions, supporting providers, health services and technology organizations, and life sciences companies. She focuses on strategy and growth, including pricing, value-based care, and go-to-market strategies.

She is a member of the Board of Trustees of the Museum of Science in Boston and a World Economic Forum Young Global Leader.



### **Ms Amira Ghouaibi**

Head, Women's Health at World Economic Forum

Amira Ghouaibi is currently the Head of Women's Health and the Lead of Women's Health Initiative at World Economic Forum, where Amira collaborates with key leaders to improve healthcare for women and vulnerable populations. Previously, Amira worked at Merck Serono as a Team Coordinator. Amira holds a Master's degree in Public Health from the University of Geneva, a Summer School Certificate in Applied Health Economics from the Swiss Tropical and Public Health Institute, and a Bachelor's degree in Business Management from Université Jean Moulin (Lyon III).



### **A/Prof Su-Yen Goh**

Associate Professor

Head and senior consultant of SingHealth Duke-NUS Diabetes Centre,  
Singapore General Hospital

Associate Professor Goh Su-Yen obtained her MBBS from National University of Singapore in 1997 and her MRCP from the Royal College of Physicians (UK) in 2000. She trained in Endocrinology at the Singapore General Hospital, and spent her fellowship year in a joint clinical and research program at The Alfred Hospital and the Baker Heart Research Institute in Melbourne, Australia. She was Director, Singhealth Duke-NUS Diabetes Centre from 2006 till 2011, and assumed the role of Head in 2011. She is also Clinical Director (Digitalisation & Technology), Department of Future Health System, SGH.





### **Dr Claire Guivarch**

Research Fellow, Intergenerational Health Working Group Lead, Global Centre for Asian Women's Health (GloW), Dean's Office and Department of O&G, Yong Loo Lin School of Medicine, National University of Singapore

After obtaining her PhD in epidemiology at the Université Paris Cité, Dr. Claire Guivarch joined the Global Centre for Asian Women's Health (GloW, website link: <https://www.glownus.org/>) at the National University of Singapore as a post-doctoral research fellow, under the mentorship of Pr. Cuilin Zhang. Leading research on the intergenerational impacts of parental factors on short and long-term offspring health in GloW, Dr. Guivarch's current studies focus on the associations between maternal plasma amino acids across pregnancy and fetal growth/neonatal anthropometry, and childhood cardio-metabolic health.



## **Ms Susana Concardo Harding**

Director at the International Longevity Centre Singapore, an Initiative of Tsao Foundation

Susana is Senior Director at the International Longevity Centre Singapore, an Initiative of Tsao Foundation. She is also Adjunct Senior Research Fellow at College of Nursing & Health Sciences at Flinders University.

Her policy and research interests are ageing and gender and its intersectionality, caregiving, financial security, community resilience, active and successful ageing, long term care, empowerment, and community development.

Susana graduated Cum Laude from the University of Santo Tomas (Manila, Philippines) with a Bachelor of Arts degree in Economics and holds master's degree in public administration (MPA) from the Lee Kuan Yew School of Public Policy at National University of Singapore.

She is also the Honorary Treasurer of the Board of Directors at Centre for Seniors, a non-profit, Social Service Agency that is dedicated to helping seniors to remain meaningfully engage in work and in life, as well as Council Member of the Gerontological Society of Singapore.



### **Prof Christiani Jeyakumar Henry**

Senior Consultant, Nutrition  
Global Centre for Asian Women's Health  
Yong Loo Lin School of Medicine  
National University of Singapore

Professor Jeyakumar Henry is Senior Advisor, Global Centre for Asian Women's Health, NUS. He was the founding Director, Clinical Nutrition Research Centre, A\*STAR, Singapore, and the Functional food Center in Oxford, UK. Trained initially as a Food scientist, he obtained his MSc and PhD in Human Nutrition from the London School of Hygiene and Tropical Medicine. He a Board member of UK Food Standards Agency. After spending nearly 35 years in UK, he moved to Singapore in 2011, to develop the food- Nutrition space in Singapore. His early career focused on energy metabolism, with the culmination of the “Henry’s Equation” to predict basal metabolic rate which is now used internationally to predict human energy requirements .He has made substantial contributions in melding food science and nutrition These include the introduction of food fortification of refugee rations, the development of low-cost high-energy foods for treating malnourished children .

In 2010, he was awarded the British Nutrition Foundation prize for his outstanding contribution to Nutrition and made a Fellow of the International Academy of Food Scientists and Technologists (2012). In 2018, he was awarded the prestigious Niigata International Food Award Japan, known as “Asian World Food Prize”.. In June 2024 he become the first Asian to be nominated a Fellow of American Society of Nutrition, the highest award in Nutrition .



### **Prof Frank B. Hu**

Fredrick J. Stare Professor of Nutrition and Epidemiology, Chair of Department of Nutrition, Harvard T.H. Chan School of Public Health

Frank Hu, MD, MPH, PhD, is the Fredrick J. Stare Professor of Nutrition and Epidemiology and Chair of the Department of Nutrition at the Harvard T.H. Chan School of Public Health. He is also Professor of Medicine at Harvard Medical School and Brigham and Women's Hospital. His major research interests include epidemiology and prevention of cardiometabolic diseases through diet and lifestyle; gene-environment interactions and risk of obesity and type 2 diabetes; nutritional metabolomics in type 2 diabetes and cardiovascular disease; and nutrition transition, metabolic phenotypes, and cardiovascular disease in low and middle-income countries. Dr. Hu serves as Director of Dietary Biomarker Development Center and Co-director of Obesity Epidemiology and Prevention Program at Harvard. Dr. Hu is the recipient of the Kelly West Award for Outstanding Achievement in Epidemiology by the American Diabetes Association in 2010. He was named the American Heart Association' Ancel Keys Memorial Lecturer in 2018. He has published a textbook on Obesity Epidemiology (Oxford University Press) and >1500 peer-reviewed papers with an H-index of 318. Dr. Hu served on the 2015 Dietary Guidelines Advisory Committee, USDA/HHS. He has served on the editorial/advisory board of The Lancet Diabetes & Endocrinology, Diabetes Care, and Clinical Chemistry. Dr. Hu a member of National Academy of Medicine.



### **Asst Prof Zhongwei Huang**

Deputy Director of the Asia Centre For Reproductive Longevity and Equality, National University of Singapore

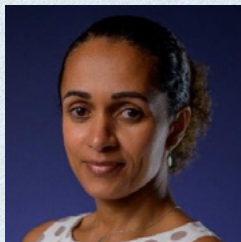
Zhongwei is a clinician-scientist and MOH accredited assisted reproductive techniques (ART) specialist who focuses on managing couples with fertility issues. He completed his PhD in 2011 under Associate Professor Dagan Wells at University of Oxford on effects of reproductive ageing via understanding the mechanisms of human oocyte aneuploidy and utilizing human cumulus cells as a non-invasive biomarker of oocyte quality. Reproductive ageing is due to the irreversible decline in quality and number of ovarian follicles as a woman ages. The ovarian follicle comprises of an oocyte and her surrounding supporting cells (cumulus/granulosa cells) which is the basic reproductive unit for the woman. The oocyte will determine a woman's fertility while the supporting cells provide the female hormones vital to maintain her general health and well-being. Thus, reproductive ageing result in loss of a woman's fertility and deterioration of her general health (cognition, cardiovascular, metabolic, immunity, musculoskeletal and sexual health). Passionate to find ways to ameliorate the detrimental effects of reproductive ageing on fertility and health outcomes of women, Zhongwei's research focus is on unravelling the biology of ovarian folliculogenesis to change the irrevocability of reproductive ageing in women to that of reproductive longevity and enhanced health-span by means of rejuvenation of her ovarian follicles. Through collaborative basic and translational research efforts across multiple disciplines and institutions as well as utilizing large data analytic tools to integrate demographical, biological and clinical data, Zhongwei aims to discover innovative solutions to change a woman's life narrative of reproductive inevitability to reproductive longevity.



### **Prof Jingjing Jiao**

Zhejiang University School of Medicine in Hangzhou, China within the Department of Nutrition at School of Public Health

Jingjing Jiao, Ph.D., is a professor at Zhejiang University School of Medicine in Hangzhou, China within the Department of Nutrition at School of Public Health. She is a joint professor at the Department of Endocrinology of the Second Affiliated Hospital of Zhejiang University School of Medicine. She is also a visiting professor at Harvard University T H Chan School of Public Health. Her research expertise includes precise nutrition and preventive medicine with a special interest in nutrition (including nutrients, diets and dietary patterns) and the prevention and control of chronic diseases especially cardiovascular metabolic diseases. Her research also focuses on the relationship between polyunsaturated fatty acids (PUFA), especially long-chain n-3 PUFA, and cardiovascular metabolic diseases and the mechanism of regulating glycolipid metabolism. She has published original research papers in top peer-reviewed journals such as BMJ, British Medical Journal, Science Advances, Circulation Research, Diabetes Care, Journal of Internal Medicine, Chemical Reviews, Microbiome, etc. She serves as a committee member of the Nutrition and Health Food Division, the Nutrition and Omics Technology Division, the Nutrition Big Data and Health Division of the Chinese Nutrition Society, and the Sports and Public Health Division of the Chinese Biophysics Society.



### **Prof Neusa Jessen**

Assistant specialist, Faculty of Medicine, Eduardo Mondlane University, Maputo, Mozambique

Obtained Medical license at the Faculty of Medicine of Eduardo Mondlane University, in Mozambique in 2005

Specialized in Cardiology in Santa Casa da Misericórdia and Procardiaco Hospital in Brasil and in Maputo Central Hospital in Mozambique), from 2010 to 2015

Obtained a PhD degree in public health at the University of Porto in Portugal, in 2020;

Currently practicing at Maputo Central Hospital in Maputo city, capital of Mozambique, as a consultant cardiologist at the Cardiology service and a researcher at the research unit of the Department of Medicine of Maputo Central Hospital. Key research interest is on cardiovascular disease – from epidemiology to management and prevention, both through population and individual approaches.

Contracted as auxiliary professor of Medicine at the Faculty of Medicine of Eduardo Mondlane University in 2022- indicated head of Internal Medicine at the Faculty in 2024.

Member of the scientific committees of the Public Health Institute of the University of Porto and the Faculty of Medicine of Eduardo Mondlane University.

Founding member and vice-president of the Mozambican Heart Association; founding member of the Mozambican NCD Alliance; and board member of the African NCD Network (ANN).

Associate editor of the journal Public Health reviews and deputy editor of the Global Heart journal.

Emerging Leader Fellow of the World Heart Federation (2017 cohort – access to essential CVD medicines); Fellow of the 1st African Heart Failure Course (2021), by PASCAR and CARDIFF University; Fellow of the 51st International Ten-day Seminar on Cardiovascular Disease Epidemiology and Prevention (2020 cohort).

Member of the New Investigators committee of the International Society of Hypertension (ISH) since 2020.

Have several publications in peer-reviewed journals.

#### **Awards and honours:**

2005- Best graduate of Medicine, Eduardo Mondlane University, Mozambique

2017- Abstract prize, at the PASCAR, Sudan Heart Society and PAFCIC Congress, Sudan

2017- Best oral communication, Scientific meeting, Maputo Central Hospital

2023 - Honourable mention, Bial Prize of Clinical Medicine 2022, Portugal

2024 – ISH Outstanding woman in hypertension research, 30th meeting of the International Society of Hypertension, Cartagena, Colombia.



## **Prof Brian Kennedy**

Director, Asian Centre for Reproductive Longevity and Equality, Yong Loo Lin School of Medicine, National University of Singapore

Dr. Brian Kennedy is a Distinguished Professor in the Departments of Biochemistry and Physiology and serves as the Director of the Healthy Longevity Translational Research Programme and the Bia-Echo Asia Centre for Reproductive Longevity and Equality, Yong Loo Lin School of Medicine, National University Singapore. In addition, he is also the Director of the Centre for Healthy Longevity, National University Health System. Collectively, NUS ageing research seeks to demonstrate that longevity interventions can be successfully employed in humans to extend healthspan, the disease-free and highly functional period of life.

Dr. Kennedy's research has been focused on delineating mechanisms driving biological aging and identifying interventions that extend healthspan and lifespan. His work was instrumental in uncovering roles for Sirtuins and the mTOR pathway in regulating aging. More recently, he has also focused on aging biomarker development.

From 2010 to 2016, Dr. Kennedy was the President and CEO of the Buck Institute for Research on Aging and he maintained a professorship there through 2020. Dr. Kennedy has an adjunct appointment in the Department of Biochemistry at the University of Washington, where he was a faculty member from 2001 to 2010, and at the Davis School of Gerontology at USC. His Ph.D. was performed in the laboratory of Leonard Guarente at M.I.T., where he published the first paper linking Sirtuins to aging.

Dr. Kennedy served as Co-Editor-In-Chief at Aging Cell from 2011-2021 and has a long track record of collaboration with scientists in China, where he was a Visiting Professor at the Aging Research Institute at Guangdong Medical College from 2009 to 2014.





### **Prof Hiromi Komiya**

Professor, Center for Women's Health, National Institute of Maternal and Child Health, Fukushima Medical University, Japan

Director of Integrated Center for Women's Health (ICWH)

#### **Brief Personal Record**

- 1986 Obtained M.D. at Yamagata Univ and started working as OB GYN
- 1998 Visiting Scholar at Baylor College of Medicine (Molecular and Cellular Biology)
- 2008 Chief, Gender Medicine Center, Fukushima Medical University Hospital
- 2014 Deputy Director of Gender Equality Promotion Division, Director of Support Officer, Director, Department of Chinese Medicine, Fukushima Medical University Hospital
- 2017 Professor, Gender Medicine Center, Fukushima Medical University Hospital
- 2022 Deputy Director, Division for Diversity Promotion, Fukushima Medical University
- 2023 Deputy Director for Diversity Promotion, Fukushima Medical University  
Fukushima Medical University

#### **Certified by following boards**

Japanese Society of Obstetrics and Gynecology, Japanese Society for Reproductive Medicine, Japanese Society of Oriental Medicine, Japanese Society of Women's Medical Science, Japanese Society of Gender Medicine and Medical Care

#### **Contributions in Research**

Topics of interest: Fallopian tube factor (Ovgp1), sex steroid receptor, outpatient care of mental health in women (including mental health of postpartum women in Fukushima after the earthquake), health issues of menopausal and aging women and support measures to extend healthy life expectancy.



## **Prof Edouard Lecarpentier**

Professor, Department of Obstetrics and Gynaecology, Centre Hospitalier Intercommunal de Créteil, Créteil, France

Édouard LECARPENTIER is a Professor in Obstetrics and Gynecology (CHI Creteil, University Paris Est, Creteil) He did his post-doctorate in the Pr KARUMANCHI's lab (Center of Vascular Biology Research, Harvard Medical School, Boston) and leads a research team at the Cochin Institute (INSERM, Université Paris Cité, Paris). His research focuses on placental vascular pathologies and innovative therapeutic approaches for preeclampsia. His team studies the development of the human feto-maternal interface (trophoblast differentiation, molecular mechanisms regulating vascular remodeling) with human trophoblastic stem cells and placental organoids models. He obtained in 2015 and 2021 two grants from the French National Research Agency for the APHERESE project (New therapeutic strategy against preeclampsia: Angiogenic switch to Physiological state by Extracorporeal Removal of sFLT1 and release of PIGF).



### **A/Prof Jason Kai Wei Lee**

Associate Professor and Director, Heat Resilience and Performance Centre, Yong Loo Lin School of Medicine, National University of Singapore

Jason Lee is an Associate Professor at the Yong Loo Lin School of Medicine, National University of Singapore. He directs the Heat Resilience and Performance Centre. Jason chaired the Scientific Committee on Thermal Factors at the International Commission on Occupational Health and currently co-chairs the Heat Injury Clinical Practice Guidelines at the Ministry of Health in Singapore. He is on the management committee at the Global Heat Health Information Network and leads the WHO-WMO GHHIN Southeast Asia Heat Health Node to scale up efforts in managing the complex health risks posed by rising ambient temperatures.



### **Prof Jung Ryeol Lee, M.D., Ph.D.**

Chairman, Department of Obstetrics and Gynecology, Seoul National University Bundang Hospital

Professor, Department of Obstetrics and Gynecology, Department of Translational Medicine, Seoul National University College of Medicine

Principal Investigator, Fertility Preservation and Enhancement Research Laboratory

Professor Jung Ryeol Lee graduated from the Seoul National University College of Medicine, where he also earned his Ph.D. Following this, he completed his residency and fellowship at Seoul National University Hospital and Seoul National University Bundang Hospital. He is currently a professor at Seoul National University College of Medicine and Seoul National University Bundang Hospital and serves as the chairman of his department.

Professor Lee has conducted extensive research and published numerous articles in the areas of fertility preservation, assisted reproductive technologies, fertility regeneration, and minimally invasive surgery. His main academic interests are fertility preservation, regeneration and anti-aging in reproduction, minimally invasive surgery, and digital medicine. He is recognized as a leading figure among Korean clinicians and researchers in fertility preservation, reproductive endocrinology, and infertility. He is also a leading surgeon in the field of minimally invasive surgery, including single-port laparoscopic and robot-assisted surgery.

In addition, Professor Lee has served as an associate editor and editor-in-chief for many international peer-reviewed journals, such as Human Reproduction, Frontiers in Endocrinology, and Journal of Menopausal Medicine. As a board or council member, he has contributed to numerous International and Korean academic societies dedicated to reproductive endocrinology and fertility preservation.



## Chef Malcolm Lee

Pangium restaurant, one Michelin star

Over the course of his career as a chef and restaurateur, Malcolm has come to believe that it is important to study history and tradition from today's perspective. At Candlenut, he has earned recognition for preserving the essence of heritage dishes from Singapore's Peranakan community. His second restaurant, Pangium — Malcolm's tasting-menu only restaurant nestled in the Singapore Botanic Gardens — is about a desire to develop enduring contemporary dishes that reflect the flavours Singaporean palates today connect with and love. It is an exploration of what he calls "the food we grew up eating through a contemporary lens".

"I hope to go further than just being local," he explains. "If you delve deeper, there's so much culinary knowledge that spans across generations and beyond the borders of Singapore. This rich regional archive of instinctive knowledge inspires me to ask questions, to discover the why and how we do the things we do — before it's too late."

Today, his vision of Contemporary Straits anchors his culinary approach. "I see Contemporary Straits — the culinary language we're beginning to articulate at Pangium — as an acknowledgement of how the food Singaporeans know and love relates with the heritage cuisines of our region," he explains. "They are interconnected in so many ways. For one, historically, the Straits of Malacca has connected Singapore with the rest of the world."

He believes that diners today are beginning to wonder how things were done in the past and why. However, he is also convinced that our heritage does not determine our future. "This is not a sentimental attempt at preserving or restoring the past," the chef says. "At Pangium, we ask ourselves: how would we do it if we were to approach the same dish with a similar mindset as the people who first created it,

but prepare it in the context of today so that diners today can hopefully connect with it." Nursing a passion for cooking since he was a child, Lee took the unconventional route of going to university, before embarking on culinary training at the At-Sunrice Globalchef Academy. But unlike many of his peers who went on to work in the kitchens of well-known restaurants, he opened his maiden restaurant, Candlenut Kitchen, in a small shophouse in Neil Road in 2010.

Over the past 13 years, Candlenut has grown to be recognised for its take on Peranakan cuisine. The restaurant received a Michelin star for the first time in 2016 and is the first Peranakan restaurant in the world to be recognised by the internationally revered guide with a star.

Malcolm asserts that his cuisine is an evolving one. "Pangium represents a coming of age for me. It is very much part of my personal journey as a chef and as a Singaporean. I feel that my cuisine — my identity — is an ongoing work in progress as it draws from our shared past — histories, cultures, traditions, and ways of living."



### **Prof Rong Li**

Chief physician, Professor, M.D

Vice president of Peking University Third Hospital, Beijing, China

Vice director of Reproductive Medical Center

President of Reproductive Medicine Branch of China Association for the Promotion of International Exchange in Healthcare and Beijing Medical Association

Vice president of ASPIRE and Professional Committee, Chinese Medical Association

Rong LI, MD, Professor, specializes in clinical treatment, education and medical researches within the fields of Obstetrics and Gynecology with research directions on reproductive medicine, female fertility preservation, endometrial receptivity and PCOS. She went to New Zealand and Germany for training and research in 2006 and 2007. She published more than 60 SCI articles in medical journals, including Cell, Nature, Lancet, et al. Her researches had been funded through variety of grants, such as National "Twelfth Five Year" Plan for Science & Technology Support. She also received many awards from Chinese government including National Science and Technology Progress Award and Scientific Progress Award from Ministry of Education.



### **Asst Prof Queenie Li**

Assistant Director (Public Affairs), Global Centre for Asian Women's Health (GloW), Dean's Office and Department of O&G, Yong Loo Lin School of Medicine, National University of Singapore

There is a strong global emphasis on the health of populations, particularly focusing on women, from a life course perspective. In her early research career, Dr. Li utilized advanced retinal imaging technology and sophisticated computer-based image analysis to explore pregnancy outcomes and early-life diseases. By examining retinal microvascular function and structure—considered a “window” into the body's general microcirculation—her research assessed their diagnostic and predictive values concerning maternal health issues such as gestational diabetes and hypertension, as well as child health outcomes like fetal growth restriction and childhood obesity.

Dr. Li's current research program investigates the determinants and transgenerational health impacts of maternal obesity and diabetes using a life-course approach. Specifically, her current activities are centred on understanding the roles of comprehensive pre-conceptual and antenatal factors, using biospecimens, in the pathogenesis of gestational diabetes and its transgenerational effects. She is convinced that her ongoing research in the fetal origins of chronic diseases, life course epidemiology, and dietary and lifestyle modifications will enhance reproductive outcomes and health for both mother and child.

Furthermore, Dr. Li has expanded her research interests to include feasible and effective intervention programs. She is particularly focused on a telemedicine approach to modify personal behaviors in pregnant women at risk of gestational diabetes during pregnancy and prediabetes or type 2 diabetes postpartum.



## Gabriel Livera

Head of the Laboratory of Development of the Gonads  
(CEA, Fontenay-aux-Roses, France)

Gabriel Livera earned his PhD under the supervision of Professor René Habert at Université Paris VI (2001). He then continued his postdoctoral research at Stanford University under the guidance of Marco Conti. In 2003, he joined Université Paris Cité as a lecturer, becoming a professor in 2012. He is actively engaged in teaching reproductive physiology to both scientific and medical students. Since 2011, he has led the Laboratory of Development of the Gonads. Professor Livera has served on national scientific committees for the CNRS and INRAE, organized the 'Frontiers of Sciences' (FtFOS), and was a member of the Institut Universitaire de France. He also plays a significant role in national reproductive societies such as FFER and GDR Repro.

### Key achievements:

Throughout his career, Gabriel Livera has focused on the fundamental mechanisms governing mouse and human fetal germ cell development, particularly in relation to their impairments due to physical or chemical pollutants. He contributed to the French national report "Environment and Reproduction" (INSERM, 2011). His research group was among the first to experimentally demonstrate the harmful effects of endocrine disruptors like phthalates and Bisphenol A on the developing gonads in humans. Additionally, his lab has advanced the understanding of meiotic mechanisms by identifying new meiotic genes. His team has developed innovative culture and xenograft models, and more recently, *in vitro* gametogenesis systems to study germ cell differentiation. His recent research has focused on meiotic entry, a crucial and vulnerable step for fertility acquisition.





### **Dr Shruthi Mahalingaiah**

Laboratory of Development of the Gonads  
(CEA, Fontenay-aux-R

Shruthi Mahalingaiah is an assistant professor of environmental, reproductive, and women's health at the Harvard T.H. Chan School of Public Health. She serves clinically as a physician at the Massachusetts General Hospital in the Department of Obstetrics and Gynecology, where she specializes in ovulation disorders, reproductive endocrinology, and infertility. Her research seeks to understand the links between environmental and modifiable risk factors on human reproduction and gynecological diseases. Shruthi is the creator of the Ovulation and Menstruation Health (OM) Study and one of the principal investigators of the Apple Women's Health Study.



### **Prof Zaleha Abdullah Mahdy**

Department of Obstetrics and Gynaecology,  
Faculty of Medicine, Universiti Kebangsaan Malaysia (UKM)

#### **Brief Bio:**

Qualifications: Medical Doctor (1989, UKM), Masters ObGyn (1997, UKM), MRCOG (1995, UK), FRCOG (2018), Doctor of Medicine (1998, Newcastle University, UK), Certified Healthcare Simulation Educator (CHSE)(2024, SSH USA).

Current Positions: Professor & Senior Consultant ObGyn, UKM; Head, Health Technology Innovation Lab, UKM.

Past administrative appointments: Dean, UKM Medical Faculty (2016-2019); Director, UKM teaching hospital (2016-2017).

National Appointments: Committee member, National Confidential Enquiry into Maternal Deaths (2022-present); Chairperson, Clinical Postgraduate Programs Entrance Examination Steering Committee under Medical Deans Council (2020-present); Chairperson, Specialty Sub-Committee for ObGyn Training (2019-2022) and Housemanship Education Sub-Committee (2022-present) under Malaysian Medical Council (MMC); member of the Medical Education Committee, MMC (2022-present); past member, Perinatal and Peri-Operative Mortality Committees (1997-2010); Fellow, Academy of Sciences, Malaysia (elected in 2022).  
Journal Publications: 139 articles.

Research Interests: Fetomaternal Medicine, Healthcare Virtual Reality (VR), medical drone development, digitalized obstetric records (MyMOMS), Customized Malaysian fetal growth chart.

Professional Bodies: Secretary, Malaysian Society for Simulation in Healthcare (MaSSH); Trainer, Intensive Course in Obstetric Emergencies, OGSM; Research Committee member, Society for Simulation in Healthcare (SSH) & Global Pregnancy Collaboration Network; Past President, Perinatal Society of Malaysia (2019-2021).

Other achievements: Black Belt (1st Dan) in Taekwondo (2011)

#### **Short Biosketch:**

Zaleha Abdullah Mahdy graduated from UKM in 1989. She is a Fellow of the RCOG, UK, and Fellow of the Academy of Science, Malaysia. Her research interests include fetal growth, anaemia, diabetes and hypertension in pregnancy particularly concerning preventive measures, healthcare technology innovation specifically the use of drone technology, IT and VR, and medical education and simulation based training, related to which she holds various posts in MMC and societies, both local and international. She was previously Dean of the Faculty of Medicine and Director of the teaching hospital, UKM.



### **Prof Miguel A. Martínez-González, MD, PhD, MPH**

Professor and Chair, Department of Preventive Medicine and Public Health, Universidad de Navarra, Pamplona, Spai

Prof. Miguel A. Martínez-González is a medical epidemiologist, Professor of Public Health at the University of Navarra, Adjunct Professor of Nutrition at Harvard TH School of Public Health (Dpt. of Nutrition) since 2016, and group leader at CIBEROBN, with >30 years of experience in epidemiologic research on chronic diseases, nutrition and lifestyles. As Principal Investigator (PI), he has designed and directed large trials and cohorts, including SUN, PREDIMED and PREDIMED-Plus, which have shed unparalleled light and scientific evidence from Spain with worldwide impact. Since 2013, he designed and is PI of the PREDIMED-Plus trial, funded by the European Research Council with an Advanced Research Grant (<https://cordis.europa.eu/project/id/340918/>).

Since 2013, he has also been actively involved, as co-PI, together with Frank B. Hu (Harvard University), in several NIH-funded grants on cardiovascular disease or type 2 diabetes assessing metabolomics in the context of the Mediterranean diet interventions.

In 1995 he founded and started the Department of Preventive Medicine and Public Health at the University of Navarra, which today is one of the most fruitful and leading Departments in Spain. Since then, Prof. Martínez-González has published more than 1000 articles and abstracts indexed in Web of Science and he is one of the most cited scientists in Spain in the ranking of all scientific areas in recent years. He has been mentor of a large group of Full Professors and Associate Professors of Epidemiology and Public Health.

He is the editor of the main textbooks in Spanish on Biostatistics (Elsevier), Epidemiology (Ariel-Planeta) and Public Health (Elsevier). In 2022, he chaired the Committee for designing a large national cohort in Spain (IMPACT) similar to the UKBiobank, which is currently undergoing its recruitment phase.

As a popularizer, his recent publications with Editorial Planeta stand out: “Salud a Ciencia Cierta (Evidence-based Health)” (2018) and “¿Qué comes? (What do you eat?)” (2020), “La sanidad en llamas (The Health System on fire)” (2021) and “Salmones, hormonas y pantallas (Salmon, hormones and screens)” (2023).

In 2023 he attained a second [Advanced Research Grant del ERC](#) to develop between 2024 and 2028 the largest ever conducted trial on [the health effects of alcohol](#).

He received several distinctions and awards both in the US (Grace Goldsmith Award, Rankin-Skratud lecture) and in Spain, including the prestigious [Premio Nacional de Investigación en Medicina Gregorio Marañón 2022](#) given by the King and Queen of Spain in March 2023. His registry of indexed publications and further information can be found in:

<https://scholar.google.es/citations?user=yZw1w4kAAAAJ&hl=en>

<https://www.webofscience.com/wos/author/record/807499>

[https://www.ncbi.nlm.nih.gov/myncbi/lhc\\_rNrdFb9Am/bibliography/public/](https://www.ncbi.nlm.nih.gov/myncbi/lhc_rNrdFb9Am/bibliography/public/)

<https://research.com/u/miguel-a-martinez-gonzalez>

<https://ranking.influscience.eu/influscencers/ranking-de-autores-y-autoras/>

[https://en.wikipedia.org/wiki/Miguel\\_Ángel\\_Martínez-González](https://en.wikipedia.org/wiki/Miguel_Ángel_Martínez-González)



### Dr Irina Mbanze

Cardiologist, Department of Cardiology, Maputo Central Hospital, Mozambique; Faculty of Medicine, Eduardo Mondlane University, Maputo, Mozambique.

Irina Mbanze, is a young Cardiologist, who works at Cardiology service, in Medicine Department of Maputo Central Hospital, in Maputo, Mozambique. She graduated as Medical Doctor from Faculty of Medicine of Eduardo Mondlane University, Mozambique in 2011 and received her certificate in Cardiology from College of Cardiology of Medical Council of Mozambique in 2019. She is currently in the first year of PhD in Medicine in the faculty of Health Sciences, at University of Cape Town, in Cape Town, South Africa.

She has particular interest in heart failure and echocardiography. Since her fellowship has been involved in research projects with big impact in her community, as the Pan African Pulmonary Hypertension Cohort Study (PAPUCO study), Blood Pressure Screening in Mozambique and the Prevalence of Sleep-disordered Breathing in Patients with Decompensated Congestive Heart Failure in Mozambique. In the last four years she has dedicated her time also to cardiac surgery program in Maputo Central Hospital, being part of Heart Team and performing intra- operative trans oesophageal echocardiography. In 2021 she was one of the 22 African Cardiologists selected to participate in the first African Course organized by PASCAR and in 2023 she was one of the 48 African clinicians selected to the first Clinical research Training – short course organized by PASCAR.

She received two international awards, a Global Scholars Program Award from the American Thoracic Society in 2016 and recently, the 2022 Mentor-Match Award from Women as One with tremendous impact in her career. She is a mother of two.

She is a co- author in the following articles:

- Effects of post tuberculosis lung disease on survival in HIV-infected individuals with pulmonary hypertension: Insights from the Pan African Pulmonary Hypertension Cohort (PAPUCO) study, Patrick D.M.C. Katoto, Sandra L. Mukasa, Karen H. Wolmarans, Mahmoud U. Sani, Kamilu M. Karaye, Irina Mbanze, Albertino Damasceno, Ana O. Mocumbi, Anastase Dzudie, Karen Sliwa, Friedrich Thienemann, published in BMJ, 2023.
- A comparison of cardiovascular imaging practices in Africa, North America, and Europe: two faces of the same coin, Suvasini Lakshmanan and Irina Mbanze, European Heart Journal - Imaging Methods and Practice, 2023.
- The prevalence of sleep-disordered breathing and associated risk factors in patients with decompensated congestive heart failure in Mozambique, Shelton Lo, Irina Mbanze, Jeremy Orr, Pamela de Young, Harvey Checkoway, Valerio Govo, Neusa Jessen, Albertino Damasceno and Atul Malhotra, published in Journal of Clinical Sleep Medicine, 2023.
- Long-Term Follow-up of Human Immunodeficiency Virus-Associated Pulmonary Hypertension: Clinical Features and Survival Outcomes of the Pan Africa Pulmonary Hypertension Cohort (PAPUCO), Friedrich Thienemann, Patrick D. M. C. Katoto, Feriel Azibani, Vitaris Kodogo, Sandra L. Mukasa, Mahmoud U. Sani, Kamilu M. Karaye, Irina Mbanze, Ana O. Mocumbi, Anastase Dzudie, and Karen Sliwa, published in Open Forum Infectious Diseases, 2022.
- Blood pressure screening in Mozambique: The May Measurement Month 2017 project Sub – Saharan Africa, Neusa Jessen, Valério Govo, Eleutério Calua, Moséstia Machava, Alima Fabula, Célia Novela, Irina Mbanze, Catarina Muianga, Reginaldo Banze, Impikaxane Zandamela, Ângelo Oliveira, Xin Xia, Thomas Beaney, Neil R Poulter and Albertino Damasceno published in Eur Heart J Suppl, 2019.
- The causes, treatment and outcome of pulmonary hypertension in Africa, Insights from the Pan African Pulmonary Hypertension Cohort (PAPUCO) Registry, Friedrich Thienemann, Anastase Dzudie, Ana O. Mocumbi, Lori Blauwet, Mahmoud U. Sani, Kamilu M Karaye, Okechukwu S Ogah, Irina Mbanze, Amam Mbakwen, Patience Udo, Kemi Tibazarwa, Albertino Damasceno, Ashley K Keates, Simon Stewart, Karen Sliwa, published in Int J Cardiol, 2016.
- Rationale and design of the Pan African Pulmonary Hypertension Cohort (PAPUCO) Study implementing contemporary registry on pulmonary hypertension in Africa, Friedrich Thienemann, Anastase Dzudie, Ana O. Mocumbi, Lori B Lauwet, Mahmoud U. Sani, Kamilu M Karaye, Okechukwu S Ogah, Irina Mbanze, Amam Mbakwen, Patience Udo, Kemi Tibazarwa, Ahmed S Ibrahim, Rosie Burton, Albertino Damasceno, Simon Stewart, Karen Sliwa, online published at BMJ, 2014.



## Prof Alexandre Mebazaa

Professor of Anesthesiology and Critical Care Medicine  
Anesthesiology and Critical Care Medicine  
Hôpital Lariboisière  
Paris, France

Alexandre Mebazaa is a Professor of Anesthesiology and Critical Care Medicine at the Hôpital Lariboisière, Paris, France, and has held the position since 2000. After qualifying from Louis Pasteur University, Strasbourg, France, he obtained his doctorate investigating the effect of endothelial cells on the calcium responsiveness of the cardiac myofilament from the Lariboisière School of Medicine. In 2012, he became Chairman of the Department of Anesthesia and Critical Care at Hôpital Lariboisière, which comprises 57 ICU beds and 40 anesthesia rooms. He is also Chair of the Educational Board of Paris Medical School, and has acted as member or chair of several Steering Committees, e.g., SURVIVE, COMPOSE and TRUE-HF.

Professor Mebazaa's research interests include mechanisms of contractile impairment during acute heart failure and biomarkers in acute heart failure. He has authored and co-authored over 300 research articles published in prestigious intensive care and cardiology journals such as *Lancet*, *Intensive Care Medicine*, *European Heart Journal* and *Journal of the American College of Cardiology*.



### **Dr Naho Morisaki**

MD, MPH, PhD, is Department Head of the Department of Social Medicine, at the National Center for Child Health and Development (NCCHD), and associate professor in Life-course Health Policy at the University of Tokyo

Naho Morisaki, MD, MPH, PhD, is Department Head of the Department of Social Medicine, at the National Center for Child Health and Development (NCCHD), and associate professor in Life-course Health Policy at the University of Tokyo. Her main research focus has been on the social, cultural, and clinical determinants as well as the long-term effects of perinatal factors with focus on nutrition and growth, including work leading to amendment of the Japanese gestational weight guidelines. Through the COVID-pandemic she has expanded research to adolescents with special focus on children's rights and mental health. More recently due to social needs in Japan her focus has further expanded to unmet needs in women's health, including but not limited to environmental factors related to menstrual disorders, menopausal disorders, and gender disparities in health. Her work with the Women's Health App LunaLuna has brought new evidence on menstrual regularity, ovulation and how environmental factors can influence it.



## **Chef Mai Pham**

Founder and Executive Chef, Star Ginger Restaurants, Cookbook Author and Food Journalist

Chef-Owner, [Lemon Grass Restaurant](#) and [Star Ginger](#), Sacramento, CA

Mai Pham is the chef-owner of the nationally acclaimed Lemon Grass Restaurant and Star Ginger in based in Sacramento, CA. A recognized expert on Southeast Asian cuisine, she is known for her fresh bright flavors of Vietnam, Thailand, and beyond. The host of TV Food Network's "Vietnam: My Country, My Kitchen" Chef Pham has authored several award-winning cookbooks including Pleasures of the Vietnamese Table which received a James Beard Award nomination, and which was named one of the top Asian cookbook titles by The New York Times and the Los Angeles Times.

In recent years, she was among the first operator to partner with campus, corporate, healthcare, and government dining entities across the U.S. in featuring fresh Asian flavors in non-commercial venues.

Born in Saigon and raised in Vietnam and Thailand, Chef Pham previously worked as a television journalist and later as a speechwriter for a California governor before returning to her love of food and cooking . @lemongrass\_sacramento @starginger.



**Prof Matthieu Resche-Rigon**

Dean of the School of Medicine, Université Paris Cité

Pr M. Resche-Rigon is medical doctor and professor in Public health and biostatistics at Paris Cité university. After a PhD on influence measures notably in survival analysis and early phases clinical trials, he developed expertise in prognostic modeling (notably in presence of complex survival data such as competing risks, missing data and centre effect), in causal inference, in missing data and in the design of clinical trials. He is highly involved in the development of prognostic model in internal medicine, haematology, oncology and intensive care in collaboration with clinicians as well as in the design of clinical trials in those medical specialty. He leads the clinical trial unit of the Saint-Louis Hospital between 2018 and 2023. He is member of the Pr Sylvie Chevret research team: Epidemiology and Clinical Statistics for Tumor, Respiratory, and Resuscitation Assessments (ECSTRRA) Team, UMR-1153, CRESS, UPCité. Since 2023, he is the dean of the Health Faculty of Paris Cité University.





## **Prof Pietro Santulli**

Professor and Director, Reproductive Medicine Unit  
Cochin Hospital, APHP,  
Université Paris Cité, Paris, France

Department of Obstetrics and Gynecology II and Reproductive Medicine,  
Cochin University Hospital, University Paris Cité, Paris, France.

RPPS : 10100174142

Email: [pietro.santulli@aphp.fr](mailto:pietro.santulli@aphp.fr)

Graduated from the University Paris Descartes, Faculty of Medicine, (MD in Obstetrics and Gynecology in 2010 and PhD in Basic Sciences in 2013), Pietro Santulli was named Associated Professor in 2014 and full Professor in Paris in 2018. He is the clinical and scientific director of the Reproductive Medicine Unit in the department headed by Prof. Charles Chapron at Cochin University Hospital in Paris. His main research activities are the following: (i) Basic research on molecular immunologic and inflammatory bases of endometriosis, adenomyosis and related infertility; (ii) Clinical research on the assessment and management (medical and/or surgical) of endometriosis-related infertility; (iii) Clinical research on infertility related gynecologic surgery and assisted reproductive technologies. In addition, he is the Chairman of an university diploma of the University Paris Cité and director of numerous medical theses. He published about 170 original articles in peer-reviewed scientific journals and authored several book- chapters. His papers have received a total of 6995 cites with an h-index of 45.



### **Prof Eva Schernhammer**

Professor and Head of Department of Epidemiology, Medical University of Vienna, Harvard Medical School

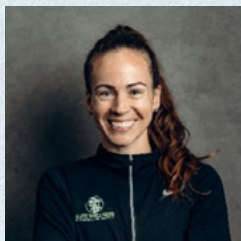
Eva S. Schernhammer is Professor and Chair of the Department of Epidemiology at the Medical University of Vienna, Adjunct Professor at the Department of Epidemiology at the Harvard T.H. Chan School of Public Health, Lecturer on Medicine at Harvard Medical School, and Associate Faculty member at the Complexity Science Hub Vienna. She is one of the founders of ASciNA (Austrian Scientists in North America), where she served many years as President and Board member. She has been associated faculty at Harvard Medical School and the Harvard T.H. Chan School of Public Health since 2003.

Eva holds a Doctor of Medicine degree from the University of Vienna Medical School, a Doctor of Public Health degree (epidemiology) from the Harvard School of Public Health, as well as a Master of Philosophy (Mag Phil) degree in psychology from the University of Vienna. She completed her medical training in Vienna and practiced for several years in hematology/oncology before moving to Boston, MA, where she lived and worked from 1999 through 2015.

Eva is best known for her studies on disturbances of the circadian clock and their role in human health. She is one of the pioneers of circadian epidemiology and leads a group of scientists in Vienna and Boston who study these concepts, using longitudinal population studies. Her projects center around the complexity and fragility of the circadian system in humans, incorporating biomarkers, and transgenerational-, gender-, and age-specific aspects into her research, applying standard and advanced statistical and mathematical modelling.

During the course of the COVID-19 pandemic, the focus of her work shifted to the specifics of the epidemiology of infectious diseases. Together with a distinguished group of scientists from around the world, including her own research group at the Department of Epidemiology in the Center for Public Health of the Medical University Vienna, she studied the characteristics of outbreaks and deliberated their potentially far reaching consequences.

Eva's work has received several international awards and is frequently featured on media around the globe. She has been elected Member of the Austrian Academy of Sciences since 2024, and Member of Academia Europea and the European Academy of Arts and Sciences since 2022.



### **Mckenna Smet**

Owner, Elite Wellness Performance and Recovery, Virginia, USA

Mckenna Smet is a seasoned fitness professional with almost 15 years of experience. She holds a Bachelor's in Exercise Science, a Master of Public Health, and is currently pursuing a PhD in Health and Human Performance. Mckenna is a Certified Strength & Conditioning Specialist (CSCS) and Health Education Specialist (CHES). In 2018, she founded Elite Wellness Performance and Recovery in Virginia, USA and has been featured in various media outlets. Her expertise spans personal training, sports performance, and holistic wellness, with a passion for creating educational content, customized fitness programs, and improving curriculum for physical education to enhance student health and performance.



## A/Prof Sun Qi

Associate Professor Department of Nutrition and Epidemiology Harvard  
T.H. Chan School of Public Health

Dr. Qi Sun is Associate Professor of Medicine at Channing Division of Network Medicine, Brigham and Women's Hospital and Harvard Medical School. Dr. Sun's primary research interests are to identify and examine biomedical risk factors, particularly dietary biomarkers, in relation to type 2 diabetes, obesity, and cardiovascular disease through epidemiological investigations. His research is primarily based on several large-scale cohort studies, including the Nurses' Health Studies and the Health Professionals Follow-up Study. Dr. Sun is also interested in understanding the role of environmental pollutants, such as perfluoroalkyl substances (PFASs) and legacy persistent organic pollutants, in the etiology of weight change and type 2 diabetes. His primary approach is to, through integrating the state-of-the-art of omics technologies and chronic disease epidemiologic approaches, elucidate novel exposure-disease associations and underlying mechanisms relevant to human beings. His research has led to the discovery of endogenous metabolites (e.g., very-long chain fatty acids), endocrine disruptors (e.g., Bisphenol A and PFASs), circulating proteins (e.g., fatty acid binding protein 4 and soluble leptin receptor), and gut microbiome as predictors or modulators of human metabolic diseases. Overall, his innovative research on multiple important topics has enhanced our understanding of the biological mechanisms underlying nutrition and metabolic health and contributed to the US dietary guidelines for chronic disease prevention. His research thus far has led to more than 300 peer-reviewed publications. Dr. Sun is currently leading a few NIH-funded projects that focus on food biomarker discovery and validation, microbial predictors of diabetes, and environmental pollutants in relation to weight change or cardiovascular disease in human populations.



### **Dr. Novi Yanti Sari**

Director of cardio-oncology program, Dr Mohammad Hoesin Hospital, Palembang, Indonesia

Dr. Novi is a heart failure cardiologist from Indonesia. After graduating from Indonesia's premier medical institution, the National Cardiovascular Center Harapan Kita Jakarta-Faculty of Medicine University of Indonesia, she further honed her skills through a fellowship at the National University Hospital in Singapore. She is currently in charge of the heart failure and cardio-oncology program in South Sumatra, Indonesia, and serves as the president of the IC-OS Indonesia chapter. She is also an active member of several organizations, including the Heart Failure Association of the ESC and the Emerging Leaders Program in the Asia Pacific Society of Cardiology. Her research focus includes cardio-oncology, hypertrophic cardiomyopathy, and cardiac amyloidosis.



**Prof Vassilis Tsatsaris**

Director Institut Santé des Femmes, Université Paris Cité

Vassilis Tsatsaris is professor of Obstetrics and Gynecology at Cochin hospital (Maternité Port-Royal, AP-HP). He is the director of the Women's Health Institute at Paris Cité University as well as the FHU-PREMA, an international research network dedicated to prematurity.

Its clinical activity is focused on the management of maternal and fetal pathologies. Its research activity aims to better understand, better detect and better manage vascular complications of pregnancy and more particularly preeclampsia. He is strongly involved in medical training at Paris Cité University and also at the National College of Teachers in Obstetrics and Gynecology.



## Prof Yves Ville

Professor and Chairman, Department of Obstetrics and Fetal Medicine, Necker Enfants Malades Hospital, Paris Descartes University, Paris, France

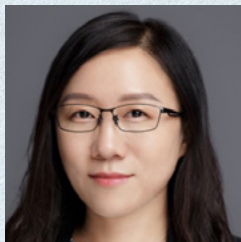
Professor and Chairman, Department of Obstetrics and Fetal Medicine, Necker Enfants Malades Hospital, Paris Descartes University, Paris, France

Professor Yves Ville is Professor and Chairman of the Department of Obstetrics and Fetal Medicine at Necker-Enfants-Malades Hospital at the Paris Descartes University.

Ville is the Chair and lead clinician in the largest fetal medicine and therapy unit in France. He has pursued a platform of work that has allowed clinical and academic progress in the subspecialty of fetal medicine, both nationally and internationally.

Professor Ville is an internationally renowned clinical academic working in the field of fetal medicine and therapy. Perhaps his largest contribution is in the field of the management of complicated multiple pregnancies, especially monochorionic twins. He has been the 'driving force' that has critically appraised evidence and demonstrated the beneficial effect of laser therapy for the management of Twin-Twin Transfusion Syndrome. This has now been the accepted treatment modality for this pregnancy-related condition worldwide. He continues to 'spearhead' academic advances in fetal therapy and evaluation including the role of tracheal occlusion in the management of congenital diaphragmatic hernia and the development and application of technologies such as the merging of ultrasound and MRI.

Professor Ville has worked hard over the last twenty years, both within the United Kingdom, France, and internationally to improve our understanding of the disease processes that may afflict the fetus. As well as advancing understanding, he has played a pivotal role in developing processes to assess and then treat the fetus with life-threatening conditions.

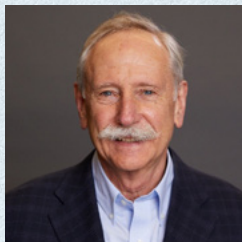


### **Dr Helena Wang**

Asia Senior Executive Editor of the Lancet

Helena Wang is the Asia Senior Executive Editor for The Lancet. Helena was the first China-based editor at The Lancet Group. She joined The Lancet as the Asia Editor in 2010, became the Asia Executive Editor in 2016, and the Asia Senior Executive Editor in 2023. Helena has co-led the Mental Health Spotlight for The Lancet's 200th anniversary, as well as the Women and Health Infocus initiative in 2024. She is also a former committee member of the Committee on Publication Ethics (COPE). Helena initially trained as a medical doctor in Tongji Medical College of Huazhong University of Science and Technology (China) and obtained her medical degree in 2000, followed by a master's degree in Pathology and Pathophysiology from Tongji Medical College of Huazhong University of Science and Technology (China) in 2003.

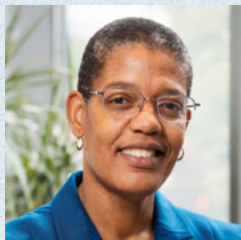




**Prof Walter C. Willett**

Professor of Epidemiology and Nutrition, Harvard T.H. Chan School of Public Health

Dr. Walter Willett is a physician and epidemiologist and Professor of Epidemiology and Nutrition at the Harvard T.H. Chan School of Public Health. As an undergraduate, he studied Food Science at Michigan State University and then graduated from medical school at the University of Michigan. He was an intern and resident at Boston City Hospital, and obtained Masters and Doctor of Public Health degrees at the Harvard School of Public Health. After graduation, Dr. Willett was a faculty member of the University of Dar es Salaam for three years, and then the Harvard School of Public Health. He served as Professor and Chair of the Department of Nutrition at Harvard for 25 years. Much of his work has been on the development of methods, using both questionnaire and biochemical approaches, to study the effects of diet on the occurrence of major diseases. He has applied these methods starting in 1980 in the Nurses' Health Studies I and II and the Health Professionals Follow-up Study. Together, these cohorts that include nearly 300,000 men and women with repeated dietary assessments are providing the most detailed information on the long-term health consequences of food choices. Dr. Willett has published over 2,000 research papers, primarily on lifestyle risk factors for heart disease and cancer, and has written the textbook, *Nutritional Epidemiology*, published by Oxford University Press. He also has four books for the general public. Dr. Willett is the most cited nutritional scientist internationally. He is a member of the National Academy of Medicine and the recipient of many national and international awards for his research.

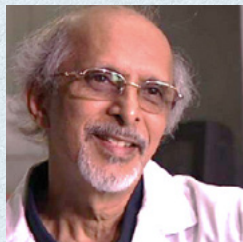


### **Prof Michelle A. Williams**

Former Dean of Harvard  
School of Public Health

Michelle A. Williams, SM '88, ScD '91, is a renowned epidemiologist, an award-winning educator, and a widely recognized academic leader. She recently stepped down as Dean of the Faculty at the Harvard T.H. Chan School of Public Health after seven years, and is currently spending a sabbatical year as a Visiting Professor at Stanford University. Following her sabbatical, she will return to the Harvard Chan School as the Joan and Julius Jacobson Professor of Epidemiology and Public Health. Prior to becoming Dean, she was Professor and Chair of the Department of Epidemiology at the Harvard Chan School and Program Leader of the Population Health and Health Disparities Research Programs at Harvard's Clinical and Translational Sciences Center.

Dr. Williams previously had a distinguished career at the University of Washington School of Public Health. Her research places special emphasis in the areas of reproductive, perinatal, pediatric, and molecular epidemiology. Dr. Williams has published more than 520 scientific articles and was elected to the National Academy of Medicine in 2016. In 2020, she was awarded the Ellis Island Medal of Honor and recognized by PR Week as one of the top 50 health influencers of the year. Dr. Williams has an undergraduate degree in biology and genetics from Princeton University, a master's in civil engineering from Tufts University, and master's and doctoral degrees in epidemiology from the Harvard Chan School.



## Prof Chittaranjan Yajnik

Professor and Head of Department of the Diabetes Unit, King Edward Memorial (KEM) Hospital, Pune, India

MD, FRCP

Professor & Director

Diabetes Unit, KEM Hospital and Research Centre, Pune, India

Attachments

Adjunct Professor, IISER, Pune

Visiting Professor Molecular Medicine, Exeter, UK

Danish Diabetes Academy

DK

Western Sydney Uni

AUS

Research interests:

1. High susceptibility to diabetes in Indians
2. Intra-uterine programming of diabetes
3. Vitamin B12 & I-C metabolism.

Awards:

Hellmut Mehnert award of the International Diabetes Federation, 2009

David Barker Medal of the International DOHaD society, 2011

Outstanding Investigator award of the World India Diabetes Foundation, 2016

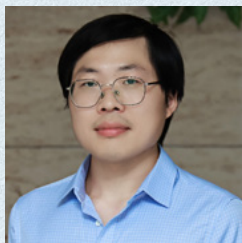
41st Gopalan Oration Award, Nutrition society of India, 2017-2018

March of Dimes Agnes Higgins Award, 2019

Top 2% in speciality in Stanford World ranking

Publications >300, h-index=93,

Top 0.5% as per Stanford ranking 2022-23-24



### Dr Guoqi Yu

Postdoctoral research fellow at the Global Centre for Asian Women's Health at the National University of Singapore

Dr. Guoqi Yu is a postdoctoral research fellow at the Global Centre for Asian Women's Health at the National University of Singapore. He specializes in environmental and perinatal epidemiology, with his research being published in top-tier journals such as *Nature Food*, *Diabetes Care*, *Environmental Health Perspectives*, *Environmental Science & Technology*, and *Environment International*.

Dr. Yu currently leads the omics working group at GLoW, focusing primarily on metabolomics, metagenomics, and pregnancy health. His research interests include: 1) Investigating the health effects of environmental chemicals and their interactions with diet on women's health. 2) Developing early prediction methods for pregnancy complications using omics techniques.



### Wen Lun Yuan, PhD

French National Institute of Health and Medical Research, based at the Centre for Research in Epidemiology and Statistics in Paris

Dr. Wen Lun Yuan is a senior research scientist at INSERM, the French National Institute of Health and Medical Research, based at the Centre for Research in Epidemiology and Statistics in Paris. She holds an undergraduate degree in Nutrition and Dietetics, as well as a graduate degree in Epidemiology from the University of Paris-Saclay. Her research focuses on advancing the understanding of maternal and child cardiometabolic health, exploring their interrelationships to improve primordial prevention and clinical practices.

Dr. Yuan's previous work on multiple birth cohorts has produced significant publications, demonstrating associations between perinatal factors—such as gestational hypertension and glycemia—and childhood cardiometabolic outcomes. Her research interests also extend to etiological studies utilizing metabolomics data. Currently, she is an active member of the LongITools consortium, a European project, where she investigates the impact of the urban environment on children's cardiometabolic health.



### Prof Cuilin Zhang

Director Global Centre for Asian Women's Health, National University of Singapore

Dr. Cuilin Zhang is a professor at the NUS Yong Loo Lin School of Medicine, and the founding Director of the Global Centre for Asian Women's Health (GloW) ([www.glownus.org](http://www.glownus.org)), and the Lead for Population Health Study program of Asian Center for Reproductive Longevity and Equity (ACRLE). Prof. Zhang holds an Adjunct Professorship at the Harvard T.H. Chan School of Public Health and Johns Hopkins Bloomberg School of Public Health.

Before joining NUS, Prof. Zhang was a Senior Investigator with tenure and interim Chief of the Epidemiology Branch, Division of Population Health Research, NICHD, National Institutes of Health (NIH), USA (2007-2021). Prof. Zhang served in the NIH Nutritional Research Task Force Writing Group for developing strategic plan on national nutritional research in the next 10 years (2021-2030) and was the NIH Intramural Subject Matter Expert of multiple themes: Nutrition Across the Lifespan, Foundational Nutrition Science; Approaches, Methods, and Tools for Dietary Intake Assessment.

Prof. Zhang is a clinical epidemiologist whose work unites nutrition, biochemistry, genetics, clinical medicine, and public health, and is at the interface of disease etiology and prevention strategies in the arena of women's and children's health over lifespan and across generations. She is leading a multi-disciplinary research program focusing on the improvement of women's health and human potentials through diet and lifestyle modification, omics research, and early screening in general. One of the focuses of is on nutrition and lifestyle, metabolic and genetic determinants, and health consequences of obesity, gestational diabetes and type 2 diabetes, and related comorbidities across the lifespan. Prof. Zhang was the recipient of the Director Award for Outstanding Contributions to the Understanding of Etiology and Risk Factors of Gestational Diabetes, NICHD, NIH.

Prof. Zhang has initiated and led multiple large cohort studies on nutrition, maternal and child health, diabetes and chronic diseases supported by NIH and National University of Singapore (> U.S.\$80 million as PI or Co-PI). Along with extensive epidemiological and clinical data as well as related biospecimen collected, these studies were well-designed for investigating a broad range of health and disease outcomes and early life precursors of perinatal, pediatric, and adult diseases based on a multi-omics platform.

Prof. Zhang currently serves in the Oversight Advisory Committee for Go Red for Women's Health Research Network of the American Heart Association, the International Advisory Committee for Chinese National Birth Cohort, and the External Advisory Board for the Cohort of Mothers/Madres in Texas, USA (COMMIT). Prof. Zhang is an Associate Editor for Diabetes Care and American Journal of Epidemiology and serves in the editorial board for Precision Nutrition.



### **Prof. WANG Yu**

MD, Professor, Chief Physician of Obstetrics & Gynecology, Doctoral Supervisor.

Deputy Director of the Shanghai ShenKang Hospital Development Center, overseeing hospital management and standard improvement of all hospitals in Shanghai

Prof. Wang used to be a member of the Party Committee and Vice President of Shanghai Renji Hospital (concurrently served as Deputy Secretary of the Party Committee and President of Nantong First People's Hospital in September 2021).

In January 2022, she was appointed as a member of the Party Committee, deputy secretary and President of Shanghai First Maternity and Infant Health Hospital. In December 2023, she was appointed as the deputy director of the Shanghai ShenKang Hospital Development Center.

### **Academic appointments**

- Head of the Shanghai Branch of the National Clinical Research Center for Obstetrics and Gynecology
- Chairman of the Gynecologic Oncology Professional Committee of the Chinese Medical Education Association
- Member of the Gynecologic Oncology Branch of the Chinese Medical Association
- Vice Chairman of the Pelvic Floor Committee of Integrated Medicine of the Chinese Medical Doctor Association
- Member of the Chinese Reproductive Health Branch of Preventive Medicine
- Member of the Medical Robot Physician Branch of the Chinese Medical Doctor Association
- Member of the Minimally Invasive Special Committee of the Obstetrics and Gynecology Branch of the Chinese Medical Doctor Association
- Member of the Robotic Surgery Branch of the Chinese Medical Doctor Association
- Vice Chairman of the Obstetrics and Gynecology Branch of Shanghai Medical Association
- Member of the Gynecologic Oncology Branch of Shanghai Medical Association
- She is a member of the editorial board of "Journal of Practical Obstetrics and Gynecology", "Shanghai Medicine", "Chinese Journal of Clinical Obstetrics and Gynecology", and "Journal of Surgical Robotics".

## DAY 1

**OP 01**

**PP 23**

**Min Tse Marie Tan**

**Assessing signal loss and accuracy of the novel ambulatory fetal electrocardiography with computerized cardiocography in the antepartum and intrapartum phases**

Yong Loo Lin School of Medicine, National University of Singapore, Singapore

**OP 02**

**Ling-Wei Chen**

**Prospective associations of metabolic jetlag and glycaemic parameters during pregnancy**

Institute of Epidemiology and Preventive Medicine, College of Public Health, National Taiwan University, Taipei, Taiwan; Master of Public Health Program, College of Public Health, National Taiwan University, Taipei, Taiwan; PhD

**OP 03**

**Gabriela Fernando**

**Exploring the nexus between Climate Change, Household Financial Hardship, and Health Consequences for women: A participatory study in Sri Lanka**

Assistant Professor, PhD (Global Health)

**OP 04**

**Na Wang**

**Association between perceived social support and post-traumatic growth among female thyroid cancer survivors: The chain mediating role of psychological resilience and coping strategies**

Capital Medical University

**OP 05**

**Qi Wang**

**Development and Internal-external Validation of Questionnaire-based Machine-learning Models to Predict Early Natural Menopause: A National Cross-sectional Study**

Department of Epidemiology, School of Public Health, Cheeloo College of Medicine, Shandong University, Jinan 250012, Shandong, China. PhD.

**OP 06**

**Mya Thway Tint**

**Inflammatory markers in apparently lean young Asian women with high adiposity: The S-PRESTO Study**

Singapore Institute for Clinical Sciences, PhD

**OP 07**

**PP 26**

**Xiaoying Zhang**

**The development of a text message bank and recommender system for a maternal mental health education program for Chinese couples**

Ph.D. Shanghai University of Medicine and Health Sciences



**OP 08**

**PP 27**

**Shen Hu**

**Association Between Arthritis and Gestational Diabetes Mellitus: Evidence from NHANES Data and Mendelian Randomization Analysis**

Harvard T.H. Chan School of Public Health(MPH) And The Second Affiliated Hospital of Zhejiang University School of Medicine (MD)

**OP 09**

**PP 25**

**Yu Bin Tan**

**Untargeted Metabolomics Reveals Steroid Metabolism, Folate, Fatty Acid and Glucosaminoglycan Biosynthesis as Key Metabolic Pathways Associated with Miscarriage Sequelae Following Threatened Miscarriage**

Duke-NUS Medical School, B.Sc.

**OP 10**

**Dongshan Zhu**

**Predicting the risk of mild cognitive impairment using non-imaging data for all participants and females**

Shandong University

## DAY 2

**OP 11**

**Jia Xu**

**The Human Gut Microbiome in Pregnancy and Early Life: Insights from the Multi-Ethnic Asian Cohorts GUSTO and S-PRESTO**

Singapore Institute for Human Development and Potential, A\*STAR; PhD

**OP 12**

**Richard Liang**

**Blood glucose and insulin measures during pregnancy and their associations with preterm birth risk: a prospective cohort study of Japanese women from 2015-2021**

Stanford University School of Medicine, Stanford, USA; National Center for Child Health and Development, Tokyo, Japan; BS

**OP 13**

**PP 30**

**Mengjiao Liu**

**Maternal smoking intensity during pregnancy and early adolescent cardiovascular health profiles**

Nanchang University; PhD

**OP 14**

**Nianwei Wu**

**Dynamic associations of gut microbiota and plasma metabolites with gestational diabetes mellitus**

Sichuan University and MSc

**OP 15**

**RuiRui Yang**

**Double Duty: The Role of Long-Term Care Insurance in Supporting Female Caregivers Who Become Comorbid Patients**

Master of Public Health

**OP 16**

**Beverly Wen Xin Wong**

**Individual and combined effects of muscle strength and visceral adiposity on incident prediabetes and type 2 diabetes in a longitudinal cohort of midlife Asian women**

Department of Obstetrics and Gynecology, Yong Loo Lin School of Medicine, National University of Singapore, Singapore; MPH

**OP 17**

**Chandramalar Kanthavelu**

**Haiducation in Action: Elevating Menstrual Health Practices through Targeted Health Education among Female Public University Hostel Students**

MD, MPH, Universiti Putra Malaysia, Ministry of Health Malaysia

**OP 18**

**PP 28**

**Mingyi Lin**

**Age-Specific Shifts in Hyperuricemia Prevalence in Beijing: A Longitudinal Study from 2012 to 2022**

School of Public Health, Hainan Medical University, MPH

## DAY 2

### OP 19

**Yixin Wang**

#### **Associations of endometriosis and uterine fibroids with risk of premature mortality: The Nurses' Health Study II**

Professor and Chair, Department of Environmental Health, Shanghai Jiao Tong University, Shanghai, China.

### OP 20

**Huihui Kang**

#### **The Effects of Mind-Body Exercises on Mental Health in Women with Polycystic Ovary Syndrome: A Systematic Review**

Hainan Provincial Key Laboratory of Sports and Health Promotion, Haikou, China. MPH.

## DAY 3

**OP 21**

**PP 24**

**Ziyuan Chen**

**Sleep duration and cardiometabolic biomarkers during pregnancy: a multi-racial prospective pregnancy cohort**

National University of Singapore Master

**OP 22**

**PP 21**

**Mingkun Tong**

**Air pollution and female reproductive health: new evidence on infertility and pregnancy loss**

Peking University, MPH

**OP 23**

**PP 22**

**Yating Li**

**Prenatal aspirin exposure leads to decreased ovarian reserve in offspring and its mechanism**

PhD of Wuhan University

**OP 24**

**Alexandrea Lishan Sia**

**One-carbon metabolism and fecundability in a Singapore Preconception Cohort Study**

Yong Loo Lin School of Medicine, National University of Singapore, National University Health System, Singapore.

**OP 25**

**Xin Yin**

**Sleep characteristics and long-term risk of type 2 diabetes in women with a history of gestational diabetes: a prospective cohort study of 44,443 person-years follow-up**

PH.D.; Global Centre for Asian Women's Health, Yong Loo Lin School of Medicine, National University of Singapore, Singapore

**OP 26**

**Ruohan Wang**

**Effectiveness of a theory-driven mindfulness-based intervention in labour pain management during normal delivery: Study protocol for a randomised controlled trial**

PhD candidate, The Nethersole School of Nursing, Faculty of Medicine, The Chinese University of Hong Kong, Shatin, Hong Kong

**OP 27**

**Chunying Fu**

**Women with Three or More Children or Early Menopause May Face Increased Hearing Loss Risk**

MPH, Department of Epidemiology, School of Public Health, Cheeloo College of Medicine, Shandong University, Jinan, China.

**OP 28**

**PP 29**

**Zekun Chen**

**Prevalence, trend, and inequality of prolonged exclusive breastfeeding among children aged 6-23 months old in India from 1992-2021: a cross-sectional study of nationally representative, individual-level data**

National University of Singapore

## DAY 3

### OP 29

Jia Xu

#### **Plant vs. Animal-Based Diets in Weight Loss and Lipid Metabolism: A Randomized Trial Using a Longitudinal Multi-Omics Approach**

Singapore Institute for Clinical Sciences, A\*STAR, Singapore; PhD

### OP 30

Jamie Lye

#### **Low Energy Availability and Eating Disorders Risk: A Comparison between Elite Female Adolescent Athletes and Ballet Dancers**

National University of Singapore / National Youth Sports Institute, PhD

### OP31

Ying Ting Er

#### **Effectiveness of Mobile Health (mHealth) Education on Gestational Weight Gain and Dietary Intake among Pregnant Women in Klang Valley, Malaysia: A Cluster Randomized Controlled Trial**

Universiti Putra Malaysia and Degree (current status: PhD student)

## DAY 1

### PP 01

**Jun Shi Lai**

**Psychosocial factors associated with dietary patterns in middle-aged multiethnic Asian women: the GUSTO study**

Singapore Institute for Clinical Sciences, ASTAR; PhD

### PP 02

**Yongwei Lin**

**Fluid Intake Behavior and Hydration States among Young Chinese Females**

Department of Nutrition and Food Hygiene, School of Public Health, Peking University; PhD student

### PP 03

**Priya Dhami**

**Determining the ontogeny and phenotype of macrophages in endometriosis**

Singapore Immunology Network A\*STAR, BSc

### PP 04

**Yuting Wei**

**Machine Learning-Based Nomogram for Predicting Depression in Women: A Cross-Sectional Study in Guangdong Province, China**

Hainan Medical University, B.S

### PP 05

**Liyan Huang**

**Association of Weekday-Weekend Eating Jet Lag with All-Cause and Cause-Specific Mortality among Employed Adults: A Prospective Study**

School of Public Health, the Second Affiliated Hospital, Zhejiang University School of Medicine, Hangzhou, China

### PP 06

**Elaine Phaik Ling Quah**

**Perinatal mental health in Singapore - Prevalence, Knowledge, Attitude and Practices**

Division of Obstetrics & Gynecology, KK Women's and Children's Hospital, Singapore ; Duke-NUS Medical School Singapore; PhD

### PP 01

**Chuanrui Sun**

**Comparative efficacy of different types of exercise on osteoporosis or osteopenia: A systematic review and network meta-analysis**

Wangjing Hospital, China Academy of Chinese Medical Sciences, PhD

## DAY 2

### PP 07

**Naho Morisaki**

**Gender difference in trends in adolescent mental health from 2021-2023: findings from the Japanese Adolescent and Youth cohort**

PhD, Department Head, Department of Social Medicine, National Center for Child Health and Development

### PP 08

**Shariffa Syahidah Chishty**

**Effects of a culturally-relevant, holistic lifestyle intervention programme for ethnic-minority women in Singapore**

University of Edinburgh

### PP 09

**Na Wang**

**Exposure to disrespectful maternity care and perceptions of respectful maternity care among nursing and midwifery pre-registration students in China: a national cross-sectional study**

Capital Medical University

### PP 10

**Lihua Zeng**

**Sweroside, the effective component of Shoutai Pills, activates cAMP signaling pathway in maternal-fetal interface of recurrent pregnancy loss**

Guangzhou Institutes of Biomedicine and Health, Chinese Academy of Sciences, Guangzhou 510530, China. Ph.D

### PP 11

**Lester Jones**

**Influences on Singaporean women's decision to continue, reduce or cease direct breastfeeding.**

Singapore Institute of Technology, Judith Lumley Centre - La Trobe University, PhD

### PP 12

**Min Su**

**Age and Gender-Specific Variations in Hemorrhoid Risk: A Decade-Long Study of 52,285 Individuals**

School of Public Health, Hainan Medical University, MPH

### PP13

**Vani Khare**

**Exploring the potential of marine diatoms in women's health and nutraceuticals**

ACRLE team

### PP32

**Tianxiao Feng**

**Cervical rotation-traction manipulation for cervical radiculopathy: A systematic review and meta-analysis of randomized control trials**

Wangjing Hospital, China Academy of Chinese Medical Sciences; Ph.D

## DAY 3

### PP 14

**Mariko Shimoda**

#### **Psychological Distress Variability Across the Menstrual Cycle: A Comparative Analysis of Premenstrual Symptom Severity**

MS, researcher, Department of Social Medicine, National Center for Child Health and Development, Setagaya, Tokyo, Japan

### PP 15

**Lihua Zeng**

#### **Unveiling Mammalian Folliculogenesis : High-Resolution 3D Imaging of Extracellular Matrix, Basement Membrane, and Somatic Cell structures in Ovarian Follicles**

Guangzhou Institutes of Biomedicine and Health, Chinese Academy of Sciences, Guangzhou 510530, China. Ph.D

### PP 16

**Thong Beng Lu**

#### **Exposure to disrespectful maternity care and perceptions of respectful maternity care among nursing and midwifery pre-registration students in China: a national cross-sectional study**

Electron Microscopy Unit, Yong Loo Lin School of Medicine, National University of Singapore, Singapore, Laboratory Technologists

### PP 17

**Fatima Hendriana Kali**

#### **Case Series Analysis of Maternal Referrals During Antenatal Care in Railaco a Rural Region in Timor-Leste**

Diploma of Midwifery

### PP 18

**Shen Hu**

#### **Non-Contact Visual Monitoring and Early Warning System for Neonatal Physiological Signals Using Deep Neural Networks**

Harvard T.H. Chan School of Public Health(MPH) And The Second Affiliated Hospital of Zhejiang University School of Medicine (MD)

### PP 19

**Padmapriya Natarajan**

#### **Preconception to Postpartum Accelerometry-based 24-Hour Movement Behaviors: A Prospective Cohort Study**

Department of Obstetrics & Gynaecology, Yong Loo Lin School of Medicine, National University of Singapore, Singapore

### PP20

**Junlong Tao**

#### **Machine Learning Models for Prediction of Uterine Fibroids**

School of Public Health, Hainan Medical University, MPH



## CONFERENCE COMMITTEE

### Co-Chairs:

Professor Yap Seng CHONG, Lien Ying Chow Professor in Medicine, and Dean, Yong Loo Lin School of Medicine, National University of Singapore, Singapore

Professor Cuilin ZHANG, Director, Global Centre for Asian Women's Health (GloW), Dean's Office; Chair Professor of Women's Health, Department of Obstetrics & Gynecology, Yong Loo Lin School of Medicine, National University of Singapore, Singapore

Professor Vassilis TSATSARIS, Director of Women's Health Institute, Université Paris Cité, France

Professor Frank B. HU, Chair, Department of Nutrition, Fredrick J. Stare Professor of Nutrition and Epidemiology, Harvard T.H. Chan School of Public Health, US

Professor Catherine DENEUX-THARAUX, Director of Women's Health Institute, Université Paris Cité, France

Professor Matthieu RESCHE-RIGON, Dean of Faculty of Health, Université Paris Cité, France

Professor Alexandre MEBAZAA, Chair of the Department of Anesthesia & Critical Care, Université Paris Cité, France

### Executive Secretariat:

Assistant Professor Queenie Ling-Jun LI, Assistant Director (Public Affairs), Global Centre for Asian Women's Health (GloW), Dean's Office and Department of O&G, Yong Loo Lin School of Medicine, National University of Singapore

Dr. Wei Wei PANG, Assistant Director (Administration), Senior Research Fellow, Human Lactation Working Group Lead, Global Centre for Asian Women's Health (GloW), Dean's Office and Department of O&G, Yong Loo Lin School of Medicine, National University of Singapore

Dr. Claire GUIVARCH, Research Fellow, Intergenerational Health Working Group Lead, Global Centre for Asian Women's Health (GloW), Dean's Office and Department of O&G, Yong Loo Lin School of Medicine, National University of Singapore

Dr. Mariana LOSADA, Paris-NUS Programme Director, Visiting Senior Research Fellow and Lecturer, NUS College, National University of Singapore

Dr. Nikita MENEZES BRAGANCA, Project Lead, Women's Health Institute, Université Paris Cité, France

### Deanery Event Office:

Mr. Luke SIAH, Senior Assistant Director (Alumni Relations, Merchandise, Events), Dean's Office, Yong Loo Lin School of Medicine, National University of Singapore

Ms. Kah Kei LEE, Dean's Office, Yong Loo Lin School of Medicine, National University of Singapore

# ACKNOWLEDGEMENTS

Women's Health  
Conference 2024

24–26 Oct • Sands Expo & Convention Centre

## GloW would like to thank:

Mdm. Rahayu MAHZAM, Minister of State, Ministry of Digital Development and Information, Ministry of Health, for officially launching the opening of Women's Health Conference 2024.

Her Excellency Ms Minh-di TANG, Ambassador of France to Singapore, for officially launching the opening of Women's Health Conference 2024.

All our distinguished speakers.

Our local and international attendees who have generously shared their experiences and knowledge for the betterment of all.

The following organizations for their support and assistance:

Haleon Singapore

International SOS

The M.I.C.E. Studio Pte Ltd

Many others who have contributed in one way or another towards organizing the Women's Health Conference 2024

# RECRUITMENT

**GLOW IS LOOKING FOR GLOBAL  
TALENTS TO JOIN OUR ENDEAVORS.**

The GloW is offering positions at multiple levels, including:

Post-doctoral research fellow

Research Associate/Assistant

Project Manager

Assistant Professor

Associate Professor

Please contact [GlowDirector@nus.edu.sg](mailto:GlowDirector@nus.edu.sg) to submit your cover letter and CV!



# DONATION TO GloW

Women's Health  
Conference 2024

24-26 Oct • Sands Expo & Convention Centre

## DONATE AND CONTRIBUTE

### WHY?

100% of the donations come from generous people like you. Your donations allow us to continuously bringing positive impacts to women across the globe.

### HOW?

One step at a time. With your commitment in giving, we are committed to bring changes to a healthier future for all women.

### WHERE?

It starts from where you are.

Regardless of your location, your giving is the spark that starts the chain of impacts, reaching every corner of the world.



Every donation makes a significant impact, bringing us one step closer to a healthier and brighter future for women worldwide. Be a catalyst for change – donate to GloW today!



Sept 24-26,  
2025

# Annual Women's Health Conference and Gala Dinner 2025 will be in **Paris**

Co-hosted by GloW and UPCité  
Supported by the Embassy of the Republic of Singapore in Paris

